



# Journal of Soil Science and Environmental Management

volume 7 Number 1 January 2016

ISSN 2141-2391



*Academic  
Journals*

## ABOUT JSSEM

The **Journal of Soil Science and Environmental Management (JSSEM)** is published monthly (one volume per year) by Academic Journals.

**Journal of Soil Science and Environmental Management (JSSEM)** is an open access journal that provides rapid publication (monthly) of articles in all areas of the subject such as Biological control of rot-inducing fungi, Post harvest losses of rice from harvesting to milling, Genetic variability studies between released varieties of cassava, Seed borne pathogens on farmer-saved sorghum etc..

The Journal welcomes the submission of manuscripts that meet the general criteria of significance and scientific excellence. Papers will be published shortly after acceptance. All articles published in JSSEM are peer- reviewed.

### Contact Us

**Editorial Office:** [jssem@academicjournals.org](mailto:jssem@academicjournals.org)

**Help Desk:** [helpdesk@academicjournals.org](mailto:helpdesk@academicjournals.org)

**Website:** <http://www.academicjournals.org/journal/JSSEM>

**Submit manuscript online** <http://ms.academicjournals.me/>

## Editors

**Dr. Willie Peijnenburg**

*RIVM – Laboratory for Ecological Risk assessment  
Leiden University, Centre for Environmental  
sciences  
Bilthoven,  
The Netherlands.*

**Dr. Geoffrey Kironchi**

*Department of Land Resource Management &  
Agricultural Technology  
University of Nairobi,  
Kenya.*

**Prof. Gamal Abdel-Nasser Khalil**

*Soil Science Dept.  
College of Food and Agricultural Sciences - King Saud  
University  
P.O. BOX 2460 - Riyadh 11451,  
Saudi Arabia.*

**Dr. Anil vyas**

*Department of Botany,  
J.N.V. University  
A-282, Shastri Nagar.*

## Editorial Board

**Dr. Elijah Ohimain**

*North Carolina A & T State University, Greensboro  
Carver Hall Room 207,  
Department of Natural Resources and  
Environmental Design,  
School of Agriculture and Environmental Science,  
USA.*

**Dr. Mohamed Rashad Abd El-Fattah**

*Arid Lands Cultivation and Development Research  
Institute,  
Mubarak City for Scientific Research and  
Technology Applications,  
Egypt.*

**Dr. Gamal Abdel-Nasser Khalil**

*King Saud University P.O. BOX 2460 – Riyadh  
11451,  
Saudi Arabia.*

**Dr. V. Krishna Murthy**

*Pes Institute of Technology,  
Ring Road, BSK III Stage, Bangalore-560 085,  
Karnataka State,  
India.*

**Dr. ANIL VYAS**

*Department of Botany,  
J. N. V. University, A-282, Shastrinagar,  
India.*

**Dr. Anthony O. Ano**

*National Roots and Tubers Research Institute  
Umudike, Umuahia, Abia State,  
Nigeria.*

**Dr Moacir de Souza Dias Junior**

*Universidade Federal de Lavras (Federal University  
of Lavras)  
Departamento de Ciência do Solo (Soil Science  
Department)  
Brazil.*

**Dr. Luki Subehi**

*Indonesian Institute of Sciences,  
Research Centre for Limnology  
Cibinong Science Centre 16911 -  
Indonesia.*

**Dr. Goswami Shreerup**

*P.G. Department of Environmental Science,  
F.M. University , Gyana Vigyana Vihar,  
Balasore-756020, Orissa,  
India.*

**Dr. Tanushree Bhattacharya**

*Institute of Science and Technology for Advanced  
Studies & Research  
ISTAR, Near V.P. Science College, Motabazar, Vallabh  
Vidyanagar,  
Anand, Gujarat 388120"  
India.*

**Dr. Suklayan Chakraborty**

*V. Patel College of Pure and Applied Sciences,  
India.*

**Dr. Ulviyya Samadova**

*Institute of Soil science and Agrochemistry of  
Azerbaijan National,  
Azerbaijan.*

**Dr. Luís Carlos Timm**

*Federal University of Pelotas  
Address Campus Universitário s/n – Capão do Leão-  
RS,  
Brazil.*

**Dr. Willie Peijnenburg**

*RIVM – Laboratory for Ecological Risk assessment  
Leiden University, Centre for Environmental sciences  
Bilthoven,  
The Netherlands.*

**Dr. Dedeke Gabriel Adewumi**

*University of Agriculture, Abeokuta, Ogun State,  
Nigeria.*

**Dr. M J Singh**

*Punjab Agricultural University, Punjab  
India.*

**Mr. Willis**

*University of Western Australia  
Australia.*

**ARTICLE**

<b>Hydrodynamic behaviour of a pilot scale anaerobic baffled reactor treating SWINE wastewater from farming</b>	<b>1</b>
Mario Tauzene Afonso Matangue, Claudio Milton Montenegro Campos, Erlon Pereira, Fabiana Amorim and Regina Vila boas	

*Full Length Research Paper*

# Hydrodynamic behaviour of a pilot scale anaerobic baffled reactor treating SWINE wastewater from farming

Mario Tauzene Afonso Matangue<sup>1\*</sup>, Claudio Milton Montenegro Campos<sup>2</sup>, Erlon Pereira<sup>2</sup>,  
Fabiana Amorim<sup>2</sup> and Regina Vila boas<sup>2</sup>

<sup>1</sup>Division of Agriculture, Department of Hydraulics and Rural Water, Higher Polytechnic of Gaza (ISPG), Gaza Province, Chókwè- Mozambique.

<sup>2</sup>Department of Water Resources in Agriculture Systems, Federal University of Lavras-Campus Universitário, Brazil.

Received 19 January, 2015, Accepted 12 November, 2015

Swine effluents are among the high pollutants effluent generated by agro-industrial activities, and therefore, inappropriate discharge can initiate fatal processes, such as eutrophication, pollution, and asphyxia of the aquatic biota. In this regard, the anaerobic baffled reactor (ABR) is viewed as a potential bioreactor to handle swine effluents since the baffles play a key role in organic matter degradation. The ABR's design and the optimization depend on the hydrodynamic knowledge, since it can determine the degree of mixing, the volumetric efficiency, the reactor geometry, and the exact model to be applied in order to determine the performance of the unit. Thus, the evaluation of the hydrodynamic behavior of ABR, set in pilot scale and continuously fed with liquid effluent from swine manure was carried out and lithium chloride was injected under steady-state operational condition using stimulus response techniques. The ABR hydrodynamics parameters were determined using numerical methods in Matlab<sup>®</sup> 2009 software. The theoretical hydraulic retention time (HRT) adopted was 16 h. The average residence time (t) found was 24.5 h, the number of dispersion  $d= 0.13$ , and the flow pattern was characterized as plug-flow with great axial dispersion. The percentage of dead zones was about 26% and volumetric efficiency ranged from 35 to 100%.

**Key words:** Swine effluent, hydrodynamic, dispersion number, tracer studies, anaerobic baffled reactor (ABR).

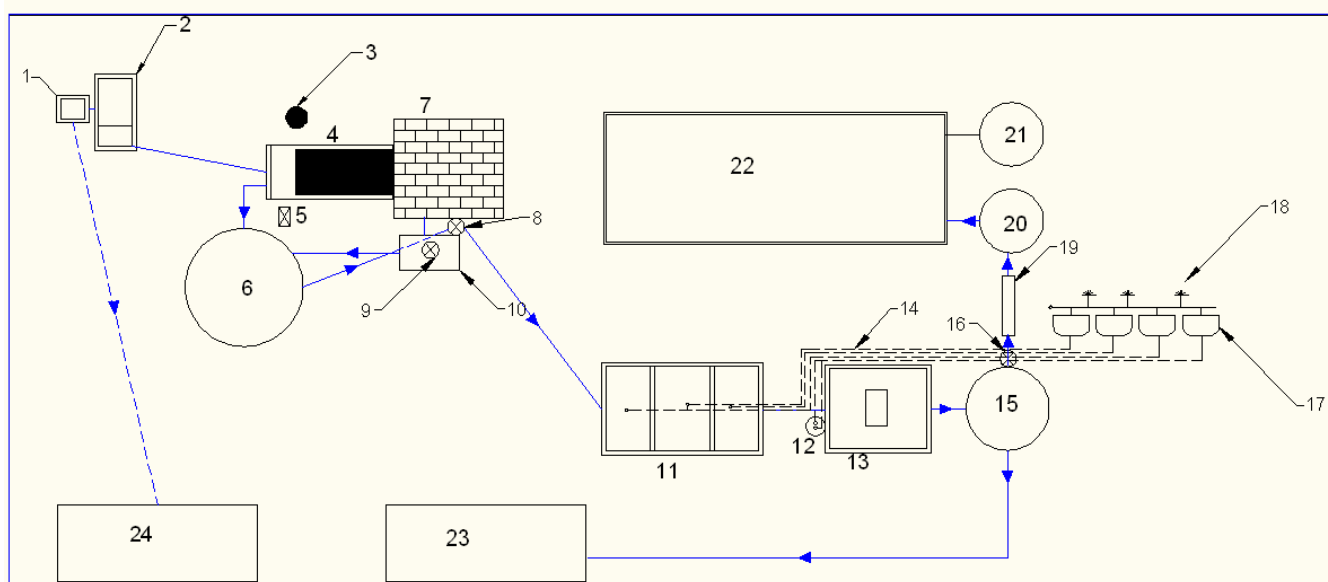
## INTRODUCTION

Swine production is one of the most growing segments among the agro-industrial activities in Brazil, whose swine hogs are numbered as 42.5 million, turning the country into the third largest swine producer in the world (ANUALPEC, 2011). Though, the swine production is a vital economical and social agricultural segment, the swine wastewater discharge may jeopardize the

surroundings ecosystems (waterbodies, soil, and atmosphere), due to the high content of organic matter, nitrogen, phosphorus, potassium, calcium, sodium, magnesium, iron, zinc, copper and other elements included in the swine food stuff (Ye et al., 2010; Matangue and Campos, 2011).

On the one hand, the discharge of this effluent, either

\*Corresponding author. E-mail: [mathauz@yahoo.com.br](mailto:mathauz@yahoo.com.br). Tel: +258-281-204-01. Fax: +258-281-00-61.



**Figure 1.** Schematic diagram showing the unities of the swine waste pilot treatment plant. Notation: 1-S and retention box; 2-Sand retention box fitted with a triangular-notch weir in order to measure the flow; 3-Thermohygrometer; 4-Stainless static sieve; 5-Power inverter; 6- Acidification and equalization tank; 7-Drainage bed; 8-Netzsch pump; 9-Anauger pump; 10-Box; 11-Anaerobic baffled reactor; 12-Pressure equalizer; 13-UASB reactor; 14-Gasepipes; 15-Effluent box; 16-Anauger pump; 17-Gasmeters; 18-Gas burners; 19-UV light; 20-Sterilized effluent Box; 21-Water tape box; 22-Green house; 23 and 24-Infiltration ponds.

in the lotic or lentic water bodies, can cause eutrophication, pollution, asphyxia of the aquatic biota, exacerbating the outbreak of waterborne diseases probability, mainly in the rural area which may affect people and cattle.

The anaerobic baffled reactor (ABR) is one of the high rate reactor pointed out for high strength organic matter, such as swine wastewater, as it consists of a series of vertical baffles which force the wastewater to flow under and over them, and as it passes from the inlet to the outlet (Boopath, 1998; Kristina et al., 2008), allowing the reactor's compartments to acclimatize to the microorganisms, responsible for the degradation process: hydrolysis, acidogenesis, acetogenesis, and methanogenesis. According to Barber and Stuckey (1999), the advantages of this reactor are simple design, low clogging rate, no requirement for biomass with an unusual settling properties, retention of biomass without fixed media, low hydraulic retention time (HRT), and high stability to organic shocks.

Moreover, the knowledge of hydrodynamics of the reactor gives a sensible information about the reactor's design, such as the dead zones, short-circuits or bypasses caused by preferential paths and the general flow pattern of the reactor which cumulatively gives the reactor overall efficiency. Under this background, this article aims at evaluating the flow pattern, volumetric efficiency and the real HRT of an ABR treating swine liquid effluent from farming, hence, subsidizing in the knowledge of reactor's design specially in full scale for

swine and other high concentrated agricultural effluents.

## MATERIALS AND METHODS

### Experimental set-up

This research was conducted at a pilot plant treatment of swine effluent installed in the Department of Animal Science, Federal University of Lavras (UFLA), as illustrated in Figure 1. The wastewater was generated from the pens and piped conducted to the treatment system by gravity through underground polyvinyl chloride (PVC) pipelines of 200 mm diameter, to a sand retention box and after to a solid retention box, fitted with a triangular-notch weir in order to measure the flow. Through gravity, the wastewater was conducted to a stainless static sieve (SS) where it was sieved to separate the solids from the liquid phase which was driven through PVC pipes to an equalization and acidification tank (EAT). From the EAT, the effluent was pumped by Memo-Netzsch pump to the ABR and then to upflow anaerobic sludge blanket (UASB) reactors. From UASB reactor, it was conducted to a settling tank (ST), where it was later on used in a greenhouse for fertirrigation.

The experiment lasted for 210 days and started-up was carried out without any inoculum. This reactor was built of solid bricks, mortar, and internally coated with asphalt blanket and in order to improve sealing, it was lined with fiberglass. The net volume of the first, second, and third chamber was 1.90 m<sup>3</sup>, 2.40 m<sup>3</sup>, and 2.2 m<sup>3</sup>/L, respectively, with working volume of 6.50 m<sup>3</sup> and each compartment was fitted with four samplers for quantitative and qualitative sludge profile monitoring. The reactor was operated with an adopted HRT of 16 h and the temperature at the local ranged from 21.9 to 24.9°C. The main operational and physical-chemical parameters of ABR are listed in Table 1 and were determined according to Standard Methods (2005).

**Table 1.** The operational and physical-chemical parameter of ABF reactor under hydraulics retention time of 16h.

Parameter	(Average± Stdv)
Reactor total volume (m <sup>3</sup> )	6.5
Average hydraulic flow (m <sup>3</sup> .h <sup>-1</sup> )	0.2
Adopted HRT (h)	16.0
<b>Main ABF reactor's influent and effluent parameters</b>	
pH	6.72 ± 0.49
Temperature (°C)	22.23 ± 4.77
Influent total solids (mg L <sup>-1</sup> )	12,991.89 ± 1,143.73
Effluent total solids (mg L <sup>-1</sup> )	5,442.21 ± 1.850.35
Influent volatile solids (mg L <sup>-1</sup> )	10,071.73± 985.97
Effluent volatile solids (mg L <sup>-1</sup> )	4,388.17 ± 569.97
Biomass (mg L <sup>-1</sup> )	12,548.06 ± 319.43
Influent COD (mg L <sup>-1</sup> )	29,305.02 ± 289,49
Effluent COD (mg L <sup>-1</sup> )	16,186.75 ± 314.58

### Experimental design

After 210 days of start-up and under steady-state operation, an amount of 1,200 g lithium chloride was previously diluted in a 5 L of deionized water, corresponding to a maximum theoretical concentration inside the reactor of 30.5 mg L<sup>-1</sup> Li<sup>+</sup> (ions). This high concentrated solution was instantaneously injected in less than 30 s using a stimulus response method. The Li<sup>+</sup> was exactly introduced in the inlet device, placed in the bottom part of the first chamber and was sampled at the outlet device placed in the top of the last chamber as shown in Figure 2.

The LiCl is one of the most used salt in the tracer studies as it is rare, not degraded by biomass activities, insignificantly adsorbed and the specific methanogenic activity decreases only by 5% at a lithium concentration of 250 mg L<sup>-1</sup> (Anderson et al., 1991; Capela et al., 2009; Lourenço and Campos, 2009). The samples were collected at constant intervals of 10 min each, using biochemical oxygen demand (BOD) glasses container with a volume of 250 ml and analyzed immediately using a Flame Photometer (Químis). The experiments lasted approximately for 3.4 days and a total of 466 samples were collected.

### Determination of hydrodynamics parameters

From preliminary results, it was noticed that the tracer curve belonged to closed vessel boundary conditions, under which, it is not possible to achieve analytical expressions for the normalized curve (E), so the numerical methods were used to construct the curve (E). The mean residence time ( $\bar{t}$ ) curve and variance ( $\sigma^2$ ) from C (concentration) versus time (t) tracer response was determined using Equations 1 and (2, respectively):

$$\bar{t} = \frac{\sum t_i C_i}{\sum C_i} \quad (1)$$

$$\sigma_t^2 = \frac{\sum t_i^2 C_i}{\sum C_i} - \left[ \frac{\sum t_i C_i}{\sum C_i} \right]^2 \quad (2)$$

The dead space volume ( $V_d$ ) was determined according to

Equation 3 as follow:

$$V_d = \left( 1 - \frac{\bar{t}}{t_{obs}} \right) \times 100\% \quad (3)$$

Where  $V_d$  is the volume of dead space (%),  $\bar{t}$  is the mean residence time from tracer experiment and  $t_{obs}$  is the observed HRT, The number of tanks in series was calculated using Equation 4.

$$N = \frac{1}{\sigma^2} \quad (4)$$

Therefore, if  $N \rightarrow 1$ , the reactor approximates to completely mixed flow, and if  $N \rightarrow \infty$ , the reactor approximates to plug-flow. The dispersion number given by the following Equation 5 which reflects the closed vessel boundary conditions as defined earlier by the reactor under study.

$$\sigma^2 = 2 \left( \frac{D}{uL} \right) - 2 \left( \frac{D}{uL} \right)^2 (1 - e^{-uL/D}) \quad (5)$$

Where  $\sigma^2$  is the variance given by residence time distribution (RTD),  $(D/ul)$  is the dispersion number, which measures the extent of axial dispersion. Thus:

$$\left( \frac{D}{uL} \right) \rightarrow 0$$

The dispersion is neglected, the flow may be tubular or plug-flow:

$$\left( \frac{D}{uL} \right) \rightarrow \infty$$

Enormous dispersion, the flow is completed mixed.

The experimental data were manipulated in Microsoft Excel<sup>®</sup> 2007 and Matlab<sup>®</sup> 2009 softwares.



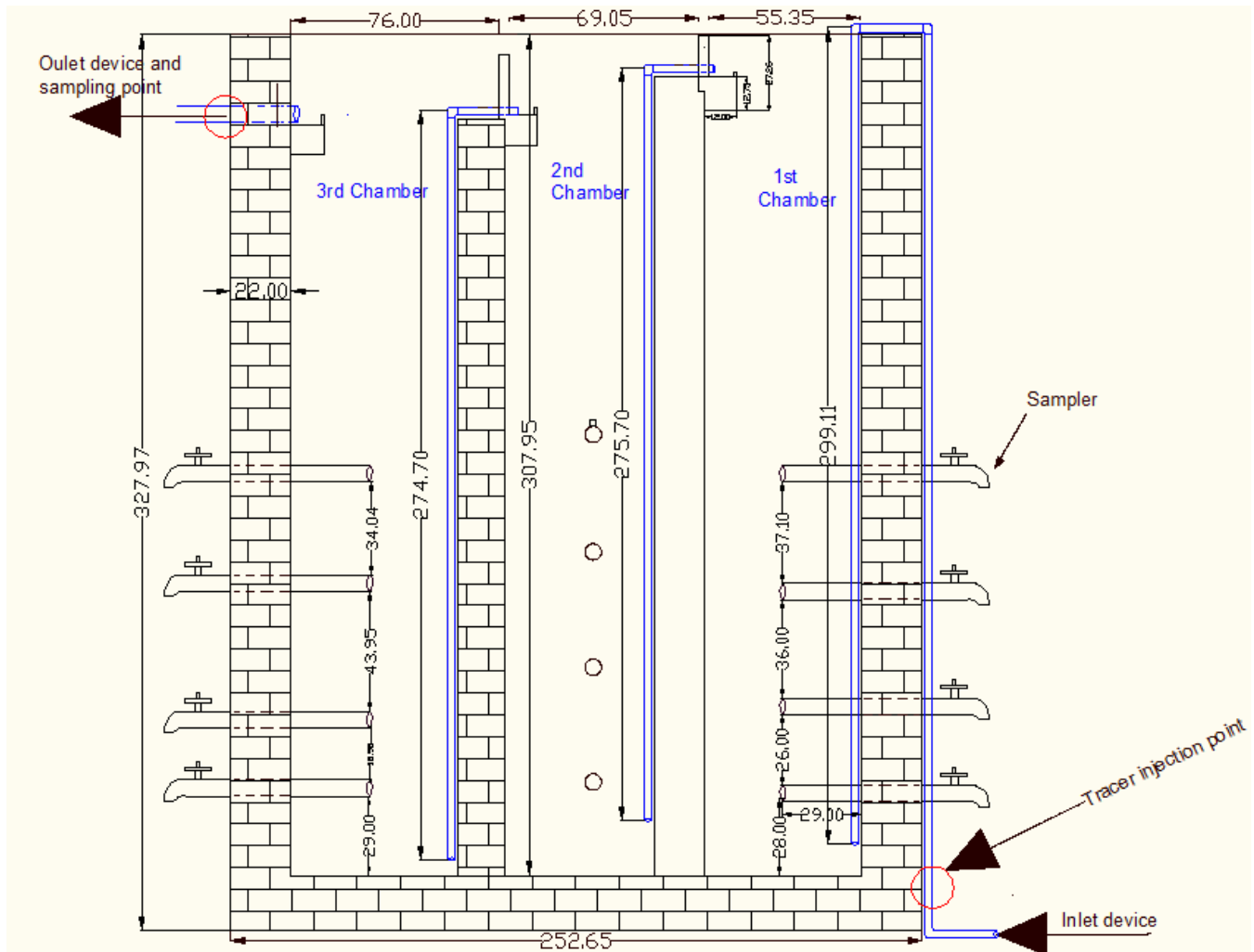


Figure 2. The front view of the anaerobic baffled reactor showing the tracer injection and sampling points.

## RESULTS AND DISCUSSION

The curve which represents the output concentration vs. time collected at the reactor's endpoint is as shown in Figure 3, where it is possible to observe particular characteristics, such as, asymmetric distribution of curve and a fair tailing meaning the presence of dead zones inside the reactor.

Likewise, some tracer material was also verified, even before the first evaluation hour likely because of the biogas production, thus evidencing the presence of bypasses in the reactor. The introspective parameter or indexes used to analyze the concentration vs. time curve are illustrated in Table 2 and they give a judicious overview about the hydraulics of the reactor.

According to Eddy and Metcalf (2003), this index has the following interpretation:

(i) If the index of short-circuiting ( $t_i/\tau$ ) = 1, then the reactor behavior is close to an ideal plug-flow reactor and if it ( $t_i/\tau$ )

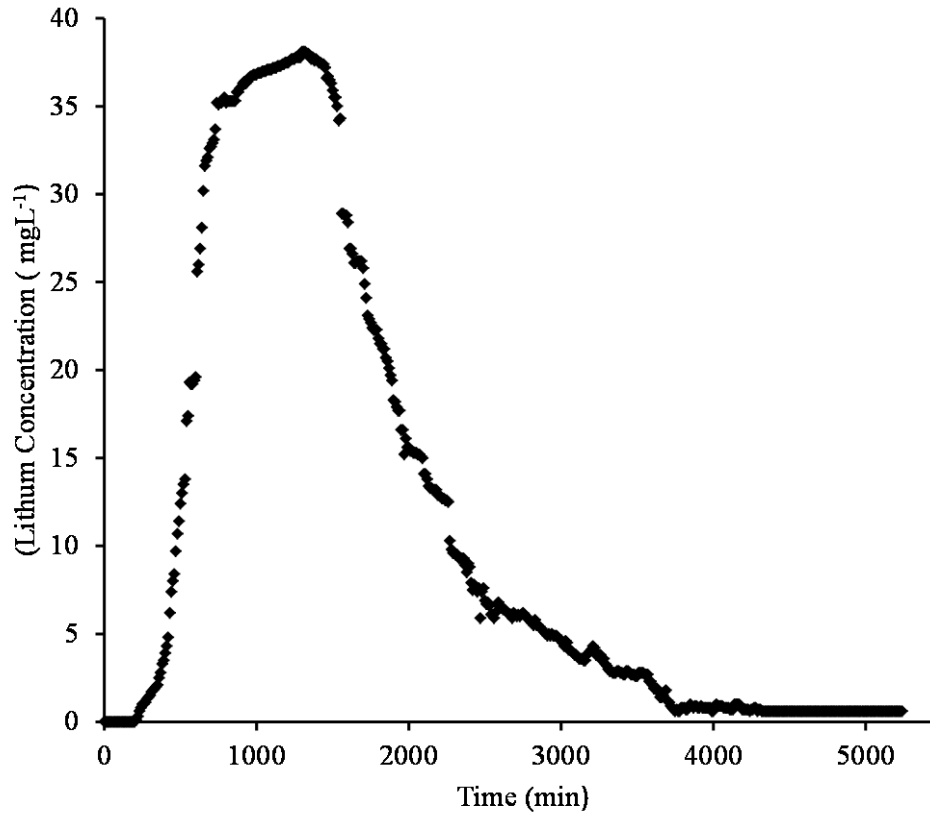
= 0, then the reactor approaches to increase mixing. This interpretation is applied to modal retention time ( $t_p/\tau$ ); (ii) If ( $t_g/\tau$ ) = 1, would indicate a full use of the volume and a value greater or less than 1, the flow disturbance in the reactor;

(iii) The index of mean retention time ( $t_{50}/\tau$ ) corresponds to the third moment which is a skewness and if the  $t_{50}/\tau$  = 1, then the RTD curve skewness is similar to Gaussian Distribution, less than 1 RTD is left-skewed and greater than 1 is right-skewed.

(iv) MDI = 1 means plug-flow pattern and MDI = 22 means completely mixed reactor.

(v) Volumetric efficiency ( $1/\text{MDI}$ ) = 1 means effective use of volume.

According to Table 2, the values of ( $t_i/\tau$ ) obtained in this reactor was 0.29, meaning that the percentage of bypasses in the reactor was 29%. And yet, the indexes of modal ( $t_p/\tau$ ) and average ( $t_g/\tau$ ) retention time were 1.80 and 2.09, respectively, showing that the flow distribution was not uniform. The bypasses and the disturbance of



**Figure 3.** The evolution and decay of Lithium concentration with time in the outlet of UASB reactor.

**Table 2.** Indexes used to evaluate the ABR hydraulic performance according to Eddy and Metcalf (2003).

Parameter	Values	Interpretation
Index of short-circuiting ( $t_i/\tau$ )	0.29	Increasing mixing
Index of modal retention time ( $t_p/\tau$ )	1.80	Flow distribution is not uniform
Index of average retention time ( $t_g/\tau$ )	2.09	Flow distribution is not uniform
Morril dispersion index ( $MDI=t_{90}/t_{10}$ )	3.22	Non-effective design
Volumetric efficiency ( $1/MDI$ )	0.31	Plug-flow with slight axial dispersion
Index of mean retention time ( $t_{50}/\tau$ )	3.65	Right skewed curve

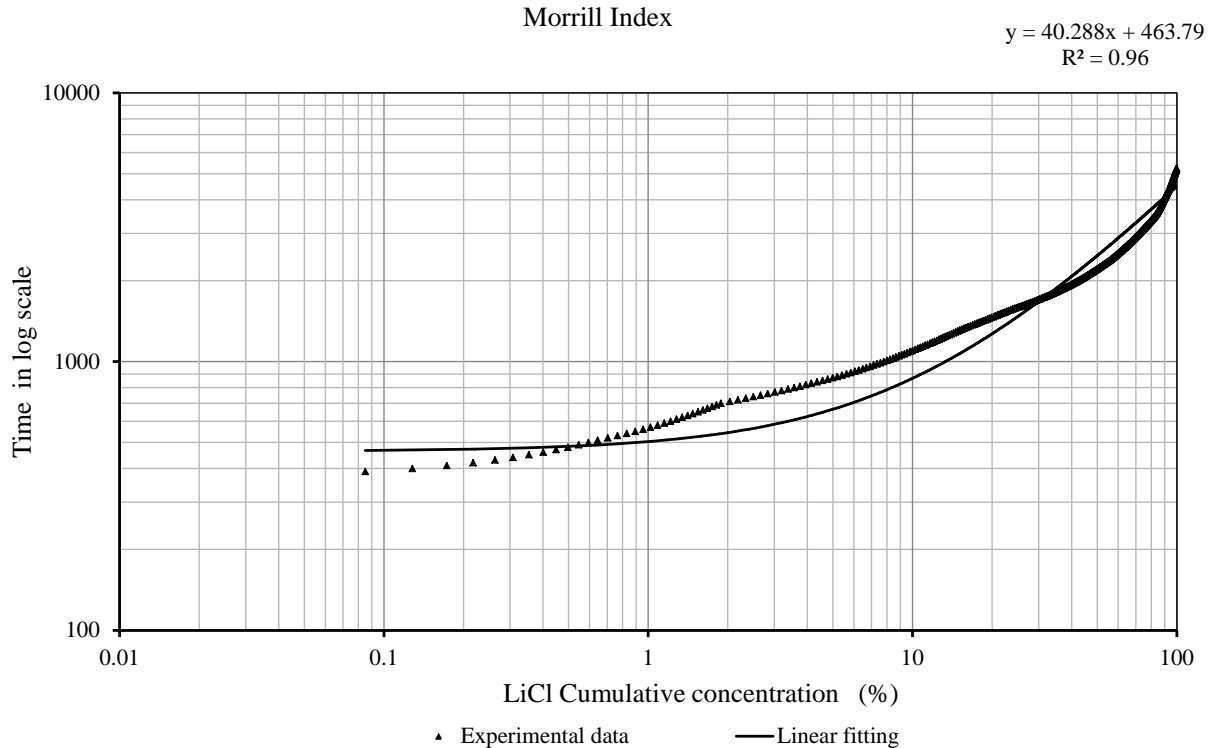
Notation:  $t_i$  = time at which tracer first appears,  $\tau$ =theoretical hydraulic residence time,  $t_p$ = time at which the pick concentration of the tracer is observed,  $t_{10}$ ,  $t_{50}$  and  $t_{90}$ = which corresponds to 10, 50, and 90 percentiles, MDI=Morril dispersion Index.

the flow in the reactor showed by ( $t_i/\tau$ ), ( $t_p/\tau$ ), and ( $t_g/\tau$ ) were mainly caused by biogas production from organic matter degradation, by the variation of volumetric load and also by the prismatic shape of the reactor, which is coupled with the gas bubbles imposed by some changes in flow direction. As for the average ratio ( $t_{50}/\tau$ ), the value was 3.65, meaning that the curve is right-skewed which may lead to draw the conclusion of stagnant backwaters inside the reactor, as illustrated by Figure 2.

The Morrill dispersive index (Table 2) was estimated according to Eddy and Metcalf (2003) methodology,

where the log-probability plot of time vs. the cumulative percentage of the total tracer was computed and depicted as illustrated in Figure 4.

Therefore, the hydraulics of the ABR may be considered as plug-flow with a slight increment of axial dispersion since MDI was 3.22 close to 1 than 22. The volumetric efficiency ( $1/MDI$ ) was 31% considered to be low signifying that the ABR had some design problems. Yet, the main parameters which give the flow pattern are mean retention time and variance at which the dispersion number and volume of dead space are estimated obtained



**Figure 4.** Volumetric efficiency (1/MDI) of ABR plotted according to Eddy and Metcalf (2003).

from RTD curve by normalization of the output tracer concentration (Figure 5) according to Equation 6. In this process, the time is turned into the dimensionless parameter ( $\theta$ ) according to Equation 6:

$$\theta = \frac{t}{\text{HRT}} \quad (6)$$

Where  $\theta$  is the dimensionless time,  $t$  is the tracer exit time at the reactor endpoint, HRT is the hydraulic retention time.

As a result, the mean residence time and variance were 24.1 and 0.22, respectively, determined from the experimental RTD curve manipulated Matlab® 2009 through numerical methods, according to Equations 1 and 2. In the same way, the dispersion number was calculated from Equation 5, using solver supplement from Microsoft Excel® 2007, whose value was 0.13. The volume of the dead space was 26% according to Equation 3. The dead space percentage is attributed to the prismatic geometry of the reactor which had many corners. Another factor related to this percentage is the settling of the total suspended solids and the rate of inactive sludge which somehow could affect the effective volume of the reactor since the swine waste are full of this variable and the sludge production rate is high. Similar results were obtained by Lourenço and Campos (2009) working with prismatic UASB reactor treating

swine waste water in lab-scale, where about 66% of dead zones were reported.

The dispersion number value was 0.13; therefore, the reactor flow pattern is described as plug-flow with a great axial dispersion. According to Levenspiel (1988) this value of dispersion number shows that the curve tracer response belongs to large deviation families' curves from plug flow when applied for close-vessel which is the case herein studied. Using Equation 4, which simulates the actual continuous stirred tank reactor (CSTR) with equal volumes in series and the extent of mixing in the reactor,  $N = 4.5$ , meaning that the reactor behaves as a 4 CSTRs. This value reinforces the aforementioned conclusion that ABR's flow pattern is plug-flow with a great axial dispersion.

#### The volumetric efficiency of ABR and the mass balance

Although the volumetric efficiency was estimated using MDI. For comparison purposes, another robust way was used. Thus, the volumetric efficiency of ABR was determined by Equation 7 according to Eddy and Metcalf (2003) and Chen et al. (2010).

$$\frac{V_N}{V1} = N \cdot \frac{1 - (1 - \eta)^{1/N}}{(1 - \eta)^{1/N}} \cdot \frac{1 - \eta}{\eta} \cdot 100\% \quad (7)$$

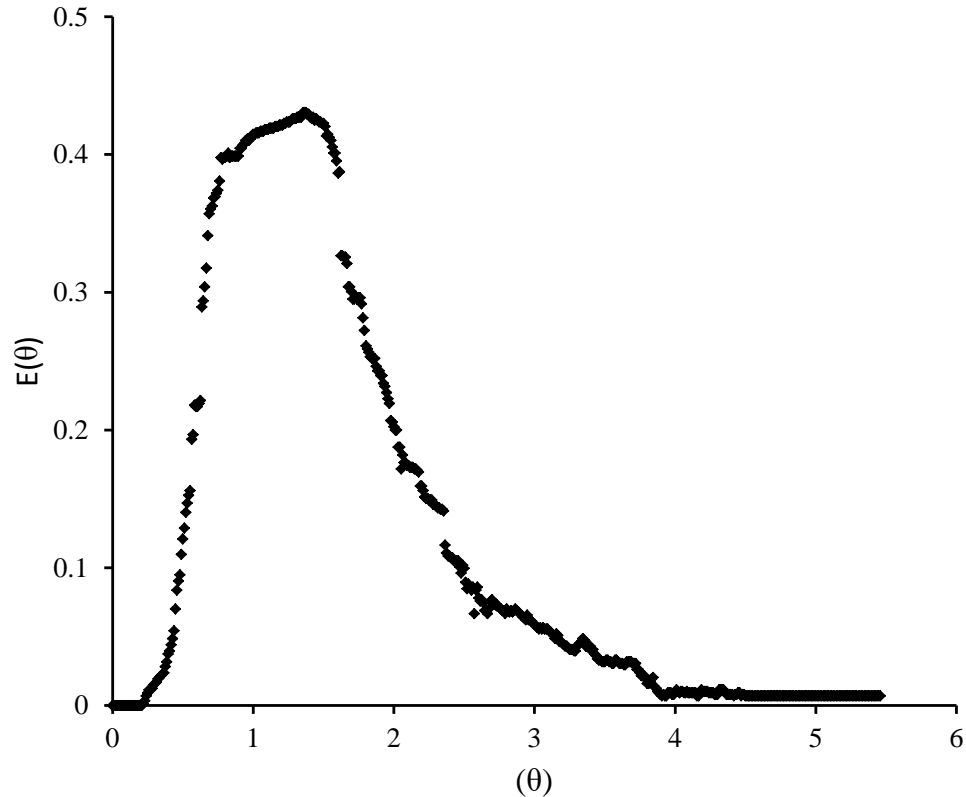


Figure 5. ABR's normalized residence time distribution.

$V_N$  is the total volume of  $N$  CSTRs in series;  $V_1$  is volume of single CSTR,  $\eta$  is the performance of the reactor.

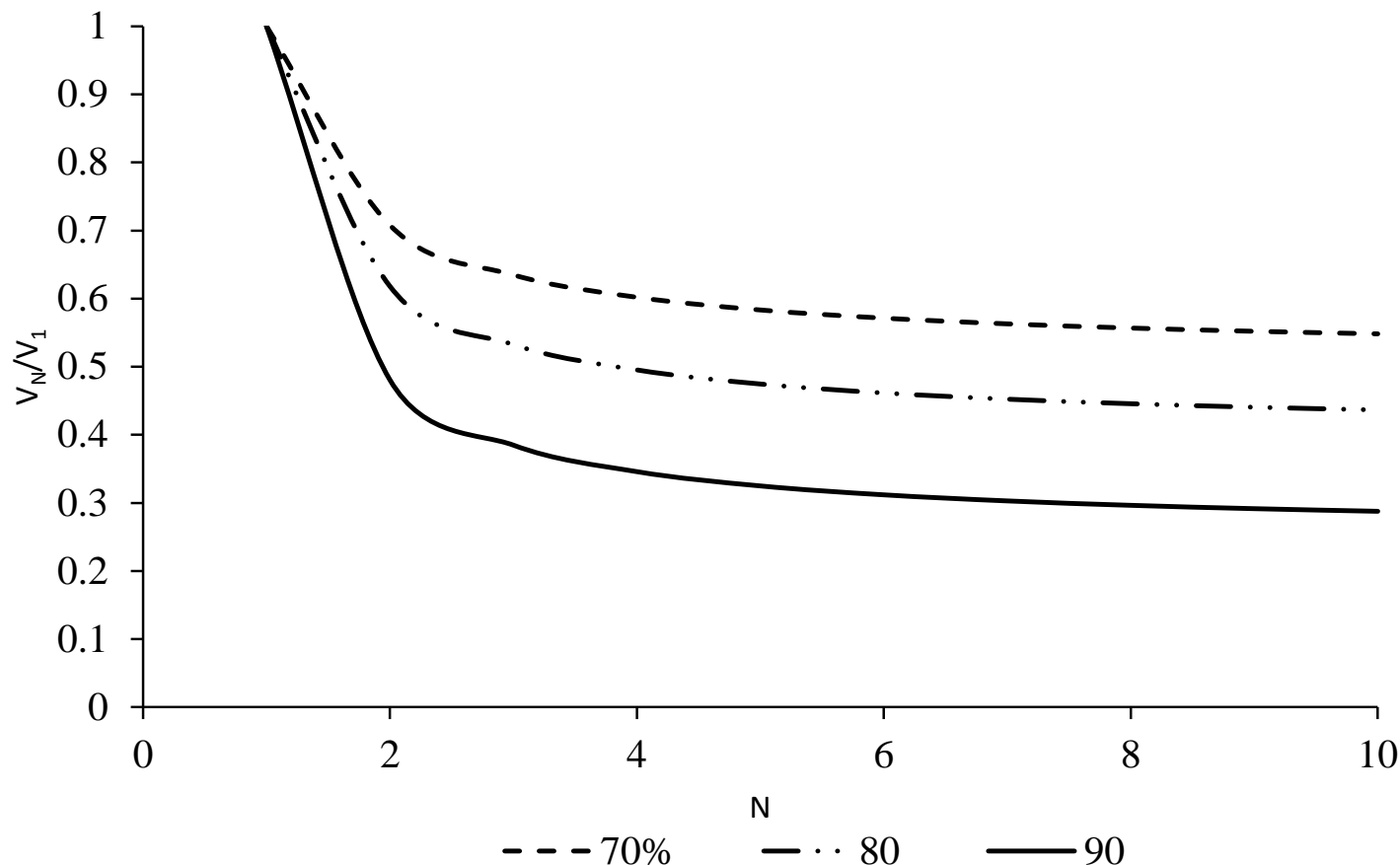
Thus, the volume ration  $V_N/V_1$  reflects the effect of flow pattern on the reactor volumetric efficiency; the degradation of organic matter in the reactor is assumed to be of first-order and each tank had similar volume and operational conditions (Chen et al., 2010). According to Barber and Stuckey (1999), the performance of the ABR may range from 70 to 90% depending on the loading rate, number of compartments, inlet chemical oxygen demand and HRT. Thus, assuming the aforementioned performance (70, 80, and 90%), three curves were depicted (Figure 6) from Equation 7, showing the variation of the total volume.

According to the Figure 6, for each performance, the volumetric efficiency is high when  $N \rightarrow 1$  and to a constant value, when  $N \rightarrow \infty$ . Thus, for instance, if one assumes 80% as the reactor's performance and  $N = 4.5$ , which is the values obtained for this reactor, therefore the volumetric efficiency would be 55%. However, as the general range was assumed from 70 to 90%, then one can conclude that the volumetric efficiency ranged from 35 to 100%, as shown in Figure 6. This range was also verified by Chen et al. (2010), when they working on hydrodynamic of super-high-rate anaerobic bioreactor, whose volumetric efficiency ranged from 40.2 to 100%.

Hence, matching the low interval of volumetric efficiency whose value was 35% with the one obtained by MDI, as shown in Table 2; the difference was quite small. This shows that although the MDI gives an overview information about the reactor's hydraulic, it may be reliable, in the same specific cases, as in this present study. For mass balance, the experimental curve was interpolated using a cubic spline approach, were the virtual functions obtained thereof, were numerically integrated to determine the area ( $\text{mg L}^{-1} \text{ day}$ ). Then, this area was multiplied by the flow rate and the amount of  $179 \text{ g Li}^+$  was obtained, which corresponds to  $1100 \text{ g}$  of  $\text{LiCl}$ . Thus, approximately 91% of the tracer was recovered during the experiment.

## Conclusion

The volumetric efficiency ranged from 35 to 100%, illustrating that the reactor design was good to handle the swine effluent. According to dispersion number value (0.13), the flow pattern of the ABR shows a plug-flow trend, with a great axial dispersion. It is well known that the plug-flow fluid regime results in better efficiency in removing organic matter than a completely mixture fluid pattern. Approximately 29% of the fluid which enters into



**Figure 6.** The variation of the total volume as a function of the increasing number of tanks in series according to the reactor performance.

the reactor undergoes bypasses and the volume of the dead zone was about 26%. The bypass is due to the increase of the volumetric loading rate (VLR) and biogas production, which in turn is correspond to the increase of the specific methanogenic activity (SMA); whereas, the dead zone is related to the prismatic shape of the ABR where the corners segregate the stagnant liquid and even sludge particles. Both phenomena, bypass and dead zones must be minimized in order to increase the efficiency of the treatment unit.

### Conflict of Interests

The authors have not declared any conflict of interests.

### ACKNOWLEDGEMENTS

The authors thank the Higher Polytechnic of Gaza (ISPG) Mozambique/Chókwè, the NUFFIC (Netherlands Organization for International Cooperation and Higher Education) for the sponsorship and also UFLA,

FAPEMIG, CAPES and CNPq for their financial support also.

### REFERENCES

- Anderson GK, Campos CMM, Chernicharo CAL, Smith LC (1991). Evaluation of the inhibitory effects of lithium when used as a tracer for anaerobic digesters. *Water Res.* 25(7):755-760.
- ANUALPEC. Anuário da Pecuária Brasileira (2011) Instituto FNP, São Paulo Instituto. P 369.
- Barber W, Stuckey DC (1999). The use of the anaerobic baffled reactor (ABR) for wastewater treatment: A review. *Water Res.* 33(7):1559-1578.
- Boopath R (1998). Biological treatment of swine waste using anaerobic baffled reactors. *Bioresour.Technol.* 64:1-6.
- Capela I, Bile JM, Silva F, Nadais H, Prates A, Arroja L (2009). Hydrodynamic behaviour of a full-scale anaerobic contact reactor using residence time distribution technique. *J. Chem. Technol. Biotechnol.* 84(35):716-724.
- Chen XG, Zheng P, Guo Y, Mahmood Q, Tang C, Ding S (2010). Flow patterns of super-high-rate anaerobic bioreactor. *Bioresour. Technol.* 101(78):7731-7735.
- Eddy L, Metcalf R (2003). *Wastewater engineering:treatment, disposal and reuse.* (4 ed.) 1334p.
- Kristina G, Kumar P, Kumar P (2007). Treatment of low strength complex wastewater using an anaerobic baffled reactor (ABR). *Bioresour. Technol.* 99:8193-8200.

- Levenspiel O (1988). Engenharia das reações químicas (1988): Cálculo de reatores. Edgard Blucher Ltd. 2:423.
- Lourenço AMP, Campos CMM (2009). Hydrodynamic behavior of lab-Scale Upflow Anaerobic Sludge Blanket (UASB) operated with an adopted Hydraulic Retention time (HRT) of 12 Hours. *Ciê. e Agrotecn.* 33(4):1139-1144.
- Matangue MTA, Campos CMM (2011). Determination of kinetic parameters of an upflow anaerobic sludge blanket reactor (UASB) treating swine wastewater. *Ciê. e Agrotecn.* 35(6):1204-1210.
- Standard methods for the examination of water and wastewater (2005). American Public Health association. 15<sup>th</sup> Edition. P 1134.
- Ye ZL, Chen SH, Wang SM, Lin LF, Yan YJ, Zhang ZJ, Chen JS (2010). Phosphorus recovery from synthetic swine wastewater by chemical precipitation using response surface methodology. *J. Hazard. Mater.* 176:1078-1083.

The background of the cover is a photograph of a person wearing bright blue rubber boots standing on a paved path. To the right, a wicker basket is filled with several ripe, red and yellow apples. The scene is outdoors with green foliage in the background.

# Journal of Soil Science and Environmental Management

## Related Journals Published by Academic Journals

- *Journal of Plant Breeding and Crop Science*
- *African Journal of Agricultural Research*
- *Journal of Horticulture and Forestry*
- *International Journal of Livestock Production*
- *International Journal of Fisheries and Aquaculture*
- *Journal of Cereals and Oilseeds*
- *Journal of Soil Science and Environmental Management*
- *Journal of Stored Products and Postharvest Research*

**academicJournals**