

Full Length Research Paper

Genetic diversity of Shaanxi soybean landraces based on agronomic traits and SSR markers

Mengjuan Liu^{1#}, Minjuan Zhang^{2#}, Wei Jiang^{2#}, Genlou Sun⁴, Huixian Zhao^{2,3*} and Shengwu Hu^{1,3*}

¹College of Agronomy, Northwest A & F University, Yangling, Shaanxi, 712100, China.

²College of Life Sciences, Northwest A & F University, Yangling, Shaanxi, 712100, China.

³State Key Laboratory of Crop Strss Biology in Arid Area (Northwest A & F University), Yangling, 712100, Shaanxi, China

⁴Department of Biology, Saint Mary's University, Halifax, Nova Scotia, B3H 3C3, Canada.

Accepted 21 March, 2011

Genetic diversity of a primary core collection of 91 soybean landraces from Shaanxi Province, China, was analyzed using simple sequence repeat (SSR) markers and agronomic traits. A total of 250 alleles were detected in the 91 soybean accessions, with a mean of 7.14 alleles per locus. The mean of polymorphism information content (PIC) was 0.26, ranged from 0.11 for Satt184 to 0.60 for Satt242. UPGMA cluster analysis and PCA analysis clearly showed that, 91 accessions formed two major clusters which generally correspond to geographic origin. Cluster I contained 76 soybean landraces and it was further separated into five subgroups (I-1 to I-5). Cluster II (northern group) included 15 accessions from northern Shaanxi. Group I-1 (Guanzhong group) contained 19 landraces, with 16 from Guanzhong, 3 from northern Shaanxi. Group I-2 (southern group I) composed of 13 accessions from southern Shaanxi and 2 from Guanzhong. Group I-3 (mixture group) contained 18 landraces, with 10 landraces from Guanzhong and 8 from southern Shaanxi. Group I-4 (southern group II) contained 21 accessions, of which 20 from southern Shaanxi and 1 from northern Shaanxi. Group I-5 (southern group III) included only 2 southern Shaanxi landraces. AMOVA analysis showed that, a significant proportion of variance (94.28%) was due to variation within populations.

Key words: Soybean (*Glycine max*(L.) Merr), landraces, genetic diversity, simple sequences repeat (SSR).

INTRODUCTION

Soybean originated in China and has been cultivated for more than 3000 years (Fukuda, 1933; Vavilov, 1951; Lu, 1978; Hymowitz and Newell, 1981; Wang, 1985; Dong,

1998; Zhou et al., 1998; Xu, 1993; Xu and Gai, 2002). It is widely distributed in China and has been cultivated in diverse geographical regions. The long history of cultivation in different environments has contributed to the evolution of many genetically distinct soybean types in China. Chinese soybean production is generally divided into Northern, Huanghuai Valley and Southern production regions. Within these three primary regions, soybean production can be further divided into seven ecotypes according to ecogeographic regions of origin and planting system, including Northeastern spring soybean (NEsp), Northern spring soybean (Nsp), Huanghuai Valley spring soybean (Hsp), Huanghuai Valley summer soybean (Hsu), Southern spring soybean (Ssp), Southern summer soybean (Ssu) and Southern autumn soybean (Sau) (Qiu et al., 2003; Wang et al., 2006). Shaanxi province is situated in the middle of Yellow River Valley, between latitudes 31° and 40°N and longitudes 105° and 112°E and with altitudes ranging from 300 to 3000 m above sea

*Corresponding author. E-mail: swhu83251@nwsuaf.edu.cn, hxzhao212@nwsuaf.edu.cn. Tel: +86 29 87082604. Fax: +86 29 87082604.

Abbreviations: NEsp, Northeastern spring soybean; Hsp, Huanghuai valley spring soybean; Hsu, Huanghuai valley summer soybean; Ssp, Southern spring soybean; Ssu, Southern summer soybean; Sau, Southern autumn soybean; SSRs, simple-sequence repeats; CTAB, cetyl trimethyl ammonium bromide; PIC, polymorphism information content; SMC, simple matching coefficients; SHAN, sequential, hierarchical and nested clustering; PCA, principal component analysis; NA, number of alleles.

#These authors contribute equally.

level, possessing diverse environments which cover three major different climate zones: southern subtropical moist and semi-moist climate, temperate semi-moist climate and temperate arid and semi-arid climate that correspond to three different geographic regions from south to north: Southern Shaanxi, Guanzhong (which is located in the middle of Shaanxi) and Northern Shaanxi. The diverse climates and geographic regions have determined the diverse cultivated soybean grown in Shaanxi province. More than 1000 *Glycine max* accessions have been collected *in situ* in Shaanxi, representing five of the seven ecotypes in China: Nsp, Hsp, Hsu, Ssp and Ssu. However, the genetic diversity of soybean landraces in Shaanxi has not been extensively investigated. A better understanding of the genetic diversity of Shaanxi soybean will help us to rationally manage and effectively utilize them in the breeding program.

Genetic diversity studies have been carried out for soybean from China. Wang et al. (2006) determined genetic diversity of 129 soybean accessions which represented Chinese soybean collection using 60 mapped SSR markers and deduced that, accessions from the lower regions of the Yellow River Valley possessed the greatest allelic richness, suggesting that the Yellow River Valley may be center for Chinese cultivated soybean. Li et al. (2008) further studied 1863 Chinese soybean landraces from 29 provinces in China using 59 SSR markers and came to the same conclusion as that of Wang et al. (2006). Chen and Nelson (2005) estimated the relationship between geographical origin and genetic diversity of soybean accessions collected from four geographically diverse provinces in China using 31 selected decamer primers and found that, primitive cultivars of China were generally genetically isolated in relatively small geographical areas. Wang et al. (2010) characterized genetic diversity among 40 soybean accessions from Shanxi province using 40 SSR primer pairs and showed that, wild soybeans and landraces possessed greater allelic diversity than cultivars. On the basis of agronomic trait variation, Dong et al. (2001) defined three diversity centers of Chinese wild soybean: the northeast, the Yellow River and the coastal region of Southeast China. Dong et al. (2004) suggested that, the phenotypic diversity center of cultivated soybean was the Yellow River region.

Significant advances in molecular genetics and genomics recently have resulted in many DNA markers which are stable and have proven to be genetically informative and useful for genotype identification and genetic diversity assessment (Keim et al., 1992; Li et al., 2001; Li and Nelson, 2001, 2002; Xu and Gai, 2003; Chen and Nelson, 2004, 2005; Wang et al., 2006; Nichols et al., 2007). Microsatellites or simple-sequence repeats (SSRs) have become useful markers for genetic analysis, because they are co-dominant with a high level of allelic diversity, easily and economically to operate (McCouch et al., 1997) and available to high throughput genotyping of

a large number of accessions. They are nearly unlimited in numbers, presumably selectively neutral and can be organized into linkage maps (Cregan et al., 1999). SSR markers have been used to evaluate genetic diversity and domestication of crops (Fu et al., 2007; Yoon et al., 2009; Li et al., 2010; Guo et al., 2010), develop genetic map (McCallum et al., 2006) and assist selection in plant breeding (Kelley et al., 2006). However, morphological and agronomic characters are still useful in valuating genetic diversity because of their visualization and easy to get.

Because it is widely planted in different ecogeographic regions in Shaanxi, soybean has evolved into various ecotypes following long-term natural and artificial selection. Using the sampling strategy proposed by Qiu et al. (2003), we established a primary core collection of soybeans from the 1035 entire soybean germplasm collection of Shaanxi province (Liu et al., 2006), this accessions were selected based on their ecotypes and phenotypic variation for morphological and agronomic traits from the 1035 Shaanxi accessions held *ex situ*. In the present study, genetic diversity of this primary core collection of soybeans was investigated using agronomic traits and SSR markers. The objective of this study is to understand the genetic diversity of soybean germplasm from Shaanxi province. This information will be very useful for rational management and allow breeders to better understand the evolutionary relationships among accessions and to develop strategies to integrate useful diversity into their breeding programs.

MATERIALS AND METHODS

Plant material

According to the sampling strategy proposed by Qiu et al. (2003), a primary core collection of 91 soybean landraces was established from the 1035 entire soybean germplasm collection of Shaanxi province to represent phenotypic variability for 15 agronomic and morphological traits, including 43 landraces from southern Shaanxi, 28 from Guanzhong and 20 from northern Shaanxi (Liu et al., 2006; Table 1). The geographic distribution of all these 91 soybean accessions from Shaanxi is shown in Figure 1. All seeds were obtained from the Chinese National Crop Germplasm Conservation Center (<http://icgr.caas.net.cn>, verified 6 January, 2006).

Agronomic characters

The field experiment was carried out using a randomized complete block design with three replications in two crop seasons 2005 and 2006 at Yangling, Shaanxi, People's Republic of China. The seeds were sown in 3 row plots, with 2.0 m in length and 0.6 m between rows and 0.2 m between plants. All the accessions were sown on April 15 each year.

The date of flowering and maturity were investigated during the growth period and then, the days to flowering and the days after flowering were counted. At the maturity stage, ten adjacent plants were randomly sampled from the middle of each plot for evaluating 9 agronomic characters: plant height, number of branches, number of nodes in the main stem, number of pods in the main stem, number of pods in branches, number of seeds per plant, seed

Table 1. The code number, the geographic regions and the assigned cluster based on SSR markers of the 91 soybean accessions used in the present investigation.

| Accession number | Code number | Geographic region (County) | Cluster |
|------------------|-------------|------------------------------|---------|
| N01 | ZDD10255 | Northern Shaanxi (Fugu) | Outlier |
| N02 | ZDD10170 | Northern Shaanxi (Huangling) | I-1 |
| M03 | ZDD10207 | Guanzhong (Tongchuan) | I-1 |
| M04 | ZDD10199 | Guanzhong (Changwu) | I-1 |
| M05 | ZDD10250 | Guanzhong (Yaoxian) | I-1 |
| M06 | ZDD10315 | Guanzhong (Tongchuan) | I-1 |
| N07 | ZDD10297 | Northern Shaanxi (Yichuan) | I-1 |
| N08 | ZDD10299 | Northern Shaanxi (Huanglong) | I-1 |
| M09 | ZDD10309 | Guanzhong (Xunyi) | I-1 |
| M10 | ZDD10337 | Guanzhong (Longxian) | I-1 |
| M11 | ZDD10371 | Guanzhong (Linyou) | I-1 |
| M12 | ZDD03614 | Guanzhong (Chang'an) | I-1 |
| M13 | ZDD03618 | Guanzhong (Fuping) | I-1 |
| M14 | ZDD10408 | Guanzhong (Lantian) | I-1 |
| M15 | ZDD10413 | Guanzhong (Fuping) | I-1 |
| M16 | ZDD10418 | Guanzhong (Chang'an) | I-1 |
| M17 | ZDD10386 | Guanzhong (Baoji) | I-1 |
| M18 | ZDD10379 | Guanzhong (Baoji) | I-1 |
| M19 | ZDD10646 | Guanzhong (Lantian) | I-1 |
| M20 | ZDD10636 | Guanzhong (Baoji) | I-1 |
| M21 | ZDD03669 | Guanzhong (Baoji) | I-3 |
| M22 | ZDD03671 | Guanzhong (Fengxiang) | I-3 |
| M23 | ZDD03666 | Guanzhong (Qishan) | I-3 |
| M24 | ZDD10730 | Guanzhong (Fufeng) | I-3 |
| M25 | ZDD10742 | Guanzhong (Pucheng) | I-3 |
| M26 | ZDD24061 | Guanzhong (Dali) | I-3 |
| M27 | ZDD10809 | Guanzhong (Lantian) | I-3 |
| M28 | ZDD03700 | Guanzhong (Baishui) | I-3 |
| M29 | ZDD10802 | Guanzhong (Fufeng) | I-3 |
| M30 | ZDD03717 | Guanzhong (Pucheng) | I-3 |
| S31 | ZDD10184 | Guanzhong (Taibai) | I-3 |
| S32 | ZDD10517 | Southern Shaanxi (Ningqiang) | I-3 |
| S33 | ZDD10458 | Southern Shaanxi (Shangnan) | I-3 |
| S34 | ZDD10460 | Southern Shaanxi (Shangnan) | I-3 |
| S35 | ZDD10422 | Southern Shaanxi (Luonan) | I-3 |
| S36 | ZDD10509 | Southern Shaanxi (Liuba) | I-3 |
| S37 | ZDD10473 | Southern Shaanxi (Shanyang) | I-3 |
| S38 | ZDD10373 | Guanzhong (Fengxian) | I-5 |
| S39 | ZDD10459 | Southern Shaanxi (Shangnan) | I-4 |
| S40 | ZDD10376 | Guanzhong (Fengxian) | I-4 |
| S41 | ZDD10609 | Southern Shaanxi (Ningshan) | I-5 |
| S42 | ZDD10445 | Southern Shaanxi (Danfeng) | I-2 |
| S43 | ZDD19503 | Southern Shaanxi (Ningshan) | I-2 |
| S44 | ZDD19497 | Southern Shaanxi (Baihe) | I-2 |
| S45 | ZDD19463 | Southern Shaanxi (Zhen'an) | I-2 |
| S46 | ZDD10442 | Southern Shaanxi (Shanxian) | I-2 |
| S47 | ZDD10454 | Southern Shaanxi (Shangnan) | I-2 |
| M48 | ZDD03629 | Guanzhong (Fufeng) | I-2 |
| M49 | ZDD24060 | Guanzhong (Yangling) | I-2 |
| S50 | ZDD10600 | Southern Shaanxi (Shiquan) | I-2 |

Table 1. Continued.

| | | | |
|-----|----------|------------------------------|-----|
| S51 | ZDD10656 | Southern Shaanxi (Luonan) | I-2 |
| S52 | ZDD10661 | Southern Shaanxi (Shangxian) | I-2 |
| S53 | ZDD10699 | Southern Shaanxi (Langao) | I-2 |
| S54 | ZDD10664 | Southern Shaanxi (Danfeng) | I-2 |
| S55 | ZDD10694 | Southern Shaanxi (Mianxian) | I-2 |
| S56 | ZDD10698 | Southern Shaanxi (Langao) | I-2 |
| S57 | ZDD10683 | Southern Shaanxi (Zhashui) | I-4 |
| S58 | ZDD10757 | Southern Shaanxi (Danfeng) | I-3 |
| S59 | ZDD10762 | Southern Shaanxi (Shangnan) | I-4 |
| S60 | ZDD10796 | Southern Shaanxi (Baihe) | I-4 |
| S61 | ZDD10775 | Southern Shaanxi (Mianxian) | I-4 |
| S62 | ZDD10777 | Southern Shaanxi (Langao) | I-4 |
| S63 | ZDD10768 | Southern Shaanxi (Zhen'an) | I-4 |
| S64 | ZDD10825 | Southern Shaanxi (Shangxian) | I-4 |
| S65 | ZDD10868 | Southern Shaanxi (Xunyang) | I-4 |
| S66 | ZDD10841 | Southern Shaanxi (Zhashui) | I-4 |
| S67 | ZDD10845 | Southern Shaanxi (Zhen'an) | I-4 |
| S68 | ZDD10828 | Southern Shaanxi (Shangxian) | I-4 |
| S69 | ZDD10883 | Southern Shaanxi (Shiquan) | I-4 |
| S70 | ZDD19536 | Southern Shaanxi (Zhenba) | I-4 |
| S71 | ZDD03691 | Southern Shaanxi (Shangnan) | I-4 |
| S72 | ZDD03706 | Southern Shaanxi (Shangnan) | I-4 |
| S73 | ZDD10927 | Southern Shaanxi (Shanyang) | I-4 |
| S74 | ZDD10907 | Southern Shaanxi (Luonan) | I-4 |
| S75 | ZDD10912 | Southern Shaanxi (Shangxian) | I-4 |
| N76 | ZDD10226 | Northern Shaanxi (Suide) | II |
| N77 | ZDD10230 | Northern Shaanxi (Zizhou) | II |
| N78 | ZDD10237 | Northern Shaanxi (Zhidan) | II |
| N79 | ZDD10242 | Northern Shaanxi (Huanglong) | II |
| N80 | ZDD10134 | Northern Shaanxi (Fugu) | II |
| N81 | ZDD10143 | Northern Shaanxi (Jingbian) | II |
| N82 | ZDD10260 | Northern Shaanxi (Yulin) | II |
| N83 | ZDD10274 | Northern Shaanxi (Fugu) | II |
| N84 | ZDD10329 | Northern Shaanxi (Wubu) | II |
| N85 | ZDD10332 | Northern Shaanxi (Zizhou) | II |
| N86 | ZDD10135 | Northern Shaanxi (Fugu) | II |
| N87 | ZDD10239 | Northern Shaanxi (Luochuan) | I-4 |
| N88 | ZDD10263 | Northern Shaanxi (Yulin) | II |
| N89 | ZDD10294 | Northern Shaanxi (Luochuan) | II |
| N90 | ZDD10252 | Northern Shaanxi (Fugu) | II |
| N91 | ZDD10270 | Northern Shaanxi (Dingbian) | II |

weight per plant, 100-seed weight and index of seed shape (index of seed shape=seed length×seed width / seed thickness², the bigger the index is, the more flat the seed is and the smaller the index is the round the seed is). When seeds had been dried, the seed protein and fat content were detected by near infrared spectroscopy DA7200 (Sweden Perten instruments Company).

DNA extraction and SSR marker analysis

Genomic DNA of each accession was extracted from dry seeds by

a modified cetyl trimethyl ammonium bromide (CTAB) method (Keim et al., 1988). The DNA concentration of all samples was calculated by spectrophotometer readings at wavelengths of 260/280 and work solution of all DNA samples was adjusted to a concentration of 10 ng/μl.

Simple sequence repeat (SSR) markers were chosen based on Wang et al. (2003) and Xie et al. (2003), then thirty-five SSR loci covering 20 soybean chromosomes were used in this study. All 35 SSR loci were shown in Supplementary Table 1. The sequences of SSR primers were obtained from soybase (<http://soybase.org/resources/ssr.php>). All primers were synthesized

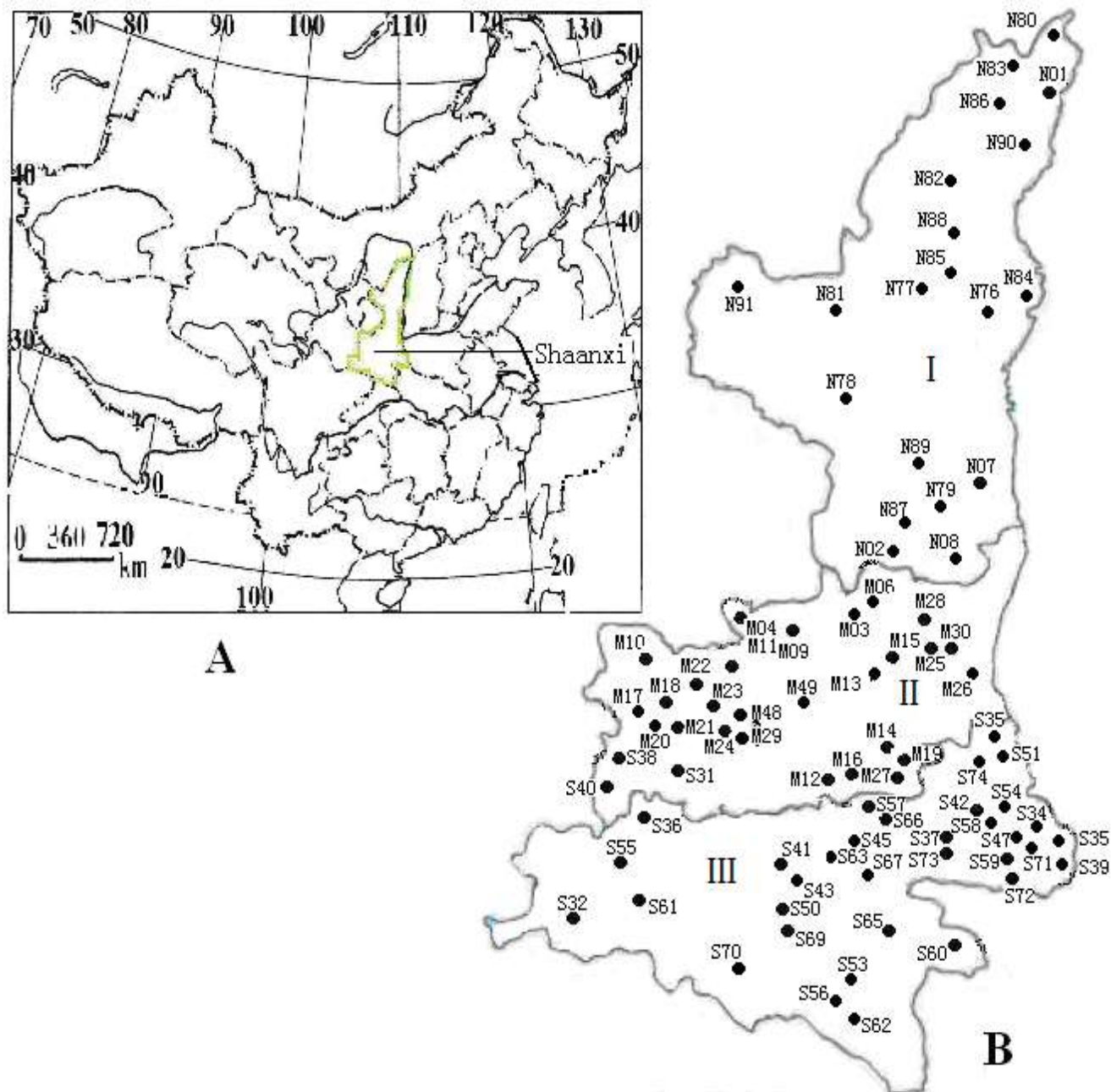


Figure 1. Geographic distribution of sampling localities of soybean landraces in the present study. A, Map of China, showing the location of Shaanxi province; B, map of Shaanxi province, in which "I" stands for north Shaanxi region, "II" stands for Guanzhong region and "III" stands for south Shaanxi region.

by Shanghai Sangon Biotechnology Company in China. Polymerase chain reaction (PCR) reactions were performed in a total volume of 20 μ l, containing 60 ng of genomic DNA, 3 mM of MgCl₂, 0.15 μ M of each primer, and 300 μ M of each dNTP, 1.25 units of Taq polymerase and 1 \times PCR buffer. The PCR program (PTC-100, Bio-rad Co. Ltd. America) was as follows: 3 min pre-denaturation at 95°C, 40 s denaturation at 94°C 40 s, annealing at from 42 to 58°C (depending on the primer used) and 40 s extension at 72°C for 35 cycles, finally 5 min incubation at 68°C. The PCR products were separated by 8% PAGE (W/V) gel in 1 \times TBE and visualized by silver staining.

Data statistics and analysis

Agronomic data from three replications were averaged and each trait was divided into 10 levels based on its mean value (\bar{x}) and standard deviation (σ), from the first grade ($x_i < (\bar{x} - 2\sigma)$) to 10th grade ($x_i \geq (\bar{x} + 2\sigma)$), every 0.5 standard deviation formed a single grade. Then, these continuous agronomic data were transformed into 0, 1 quality data based on the above 10 levels, the data was recorded as 1 where the agronomic trait value was at the level, the

Table 2. The average NA, PIC and SMC of each population from geographic region.

| Geographic region | Average number of alleles per locus | Average PIC | Average pairwise SMC |
|-------------------|-------------------------------------|-------------|----------------------|
| Northern Shaanxi | 5.40 | 0.67 | 0.802 |
| Guanzhong | 5.54 | 0.68 | 0.811 |
| Southern Shaanxi | 5.91 | 0.71 | 0.809 |

data was recorded as 0 where the agronomic trait value was not at the level. The frequency of different levels was calculated, then the genetic diversity of different agronomic traits in northern Shaanxi, Guanzhong, southern Shaanxi as well as the whole province was estimated by using the formula:

$$H' = \sum_{i=1}^n p_i \ln p_i,$$

Where P_i is the frequency of the i th level and n is the total number of levels.

Alleles were scored as either present (1) or absent (0) for each SSR locus for statistical analysis. The polymorphism information content (PIC) value of the single locus (i) was calculated by the following formula (Weir, 1990):

$$PIC_i = 1 - \sum_{j=1}^n p_{ij}^2,$$

Where p_{ij} is the frequency of the j th allele of the i th marker locus and n is the total number of alleles.

The original data matrix was formed including both SSR data and agronomic data and entered into the NTSYS program (Rohlf, 1992). The data were analyzed using the qualitative routine to generate simple matching coefficients (SMC), calculated as $SMC = a/(n-d)$, where a is the number of bands in common between two accessions, n is the number of bands in the matrix and d is the number of bands absent in both accessions (Sokal and Michener, 1958). Simple matching coefficients were used to construct a dendrogram by the unweighted pair-group method with arithmetic mean (UPGMA) and the sequential, hierarchical and nested clustering (SHAN) routine in the NTSYS program. Principal component analysis (PCA) was performed with the same program using the Decenter and Eigen procedures.

The components of variance attributable to differences geographic regions of Shaanxi province and among individuals within regions were estimated from the genetic distance matrix, as specified in the analysis of molecular variance (AMOVA) procedure in ARLEQUIN version 3.1 (<http://cmpg.unibe.ch/software/arlequin3/>). A non-parametric permutation procedure with 3000 permutations was used to test the significance of variance components associated with the different possible levels of genetic structure in this study (Excoffier et al., 1992). The pairwise F_{st} values, a value of F statistic analogs computed from AMOVA, were used to compare genetic distances between any two groups.

RESULTS

Agronomic traits diversity

The value of 13 agronomic traits of each accession and

the maximum, minimum, average, standard deviation and coefficient of variance (CV) for each trait were shown in Supplementary Table 6. The genetic diversity indices of 13 agronomic traits of Shaanxi soybean were between 1.65 (seed shape index) to 2.06 (protein content). Genetic diversity indices were different from regions or traits. However, genetic diversity indices of whole province were the highest in 10 of the 13 agronomic traits (Figure 2). Among different regions, 7 of 13 agronomic traits (plant height, no. of pods in the main stem, number of pods in branches, number of seeds per plant, seed weight per plant, index of seed shape and fat content) displayed highest genetic diversity indices in Guanzhong population, whereas 3 traits (number of nodes in the main stem, protein content and days after flowering) showed the highest genetic diversity indices in Southern Shaanxi population. Number of branches, 100-seed weight and days to flowering displayed the highest genetic diversity indices in the Northern Shaanxi population. Although, genetic diversity was different from trait to trait, the average genetic diversity index of 13 traits was highest in Guanzhong, followed by Southern and Northern Shaanxi, respectively. For example, genetic diversity index of seed shape index was much higher in Northern Shaanxi or Guanzhong than that in Southern Shaanxi. Figure 2 also indicated that, most morphological traits (plant height, no. of main stem, etc.) in Guanzhong population varied greatly, while growth traits (days to flowering and days after flowering) varied little compared with other 2 populations.

SSR allelic diversity

A total of 250 alleles were detected in the 91 accessions at 35 SSR loci. Supplementary Figure 5 showed the amplification result of all 91 accessions by the primer Satt259. The number of alleles (NA) at a locus varied from 4 for Satt230 to 12 for Satt259 and satt590, with a mean of 7.14 alleles per locus. 15 of the 250 alleles (6.0%) were unique and detected in only one accession. 20 alleles were specific to northern Shaanxi landraces and southern Shaanxi landraces, respectively, 8 alleles only detected in Guanzhong landraces. The PIC ranged from 0.40 for Satt242 to 0.89 for Satt184 with a mean of 0.74 per locus. The number of alleles per locus and PIC value for each locus of all 91 accessions were presented in Supplementary Table 5. The mean NA was the highest

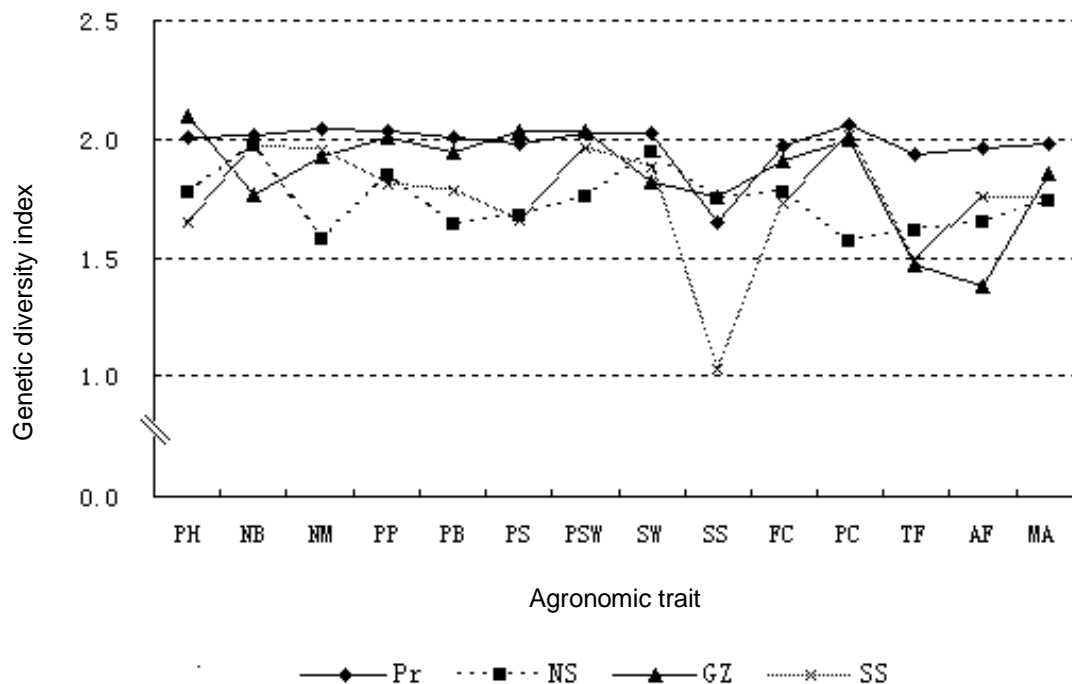


Figure 2. Genetic diversity index of 13 agronomic traits in whole province and different regions. Plant height (PH); no. of branches(NB); no. of nodes in main stem(NM); no. of pods in main stem(PP); no. of pods in branches(PB); no. of seeds per plant (PS); seed weight per plant (PSW); 100-seed weight (SW); index of seed shape (SS); fat content (FC); protein content (PC); days to flowering (TF); days after flowering (AF); average genetic diversity index of 13 traits (MA). Whole province (Pr), Northern Shaanxi (NS), Guanzhong (GZ) and Southern Shaanxi (SS).

in southern Shaanxi landraces (5.91), followed by Guanzhong landraces (5.54) and northern Shaanxi landraces (5.40). The mean PIC value showed similar trends as mean NA (Table 2).

Supplementary Figure 6 showed the genetic diversity indices of 35 SSR loci detected by the stated 35 primers. Genetic diversity indices of whole province were the highest in 12 of the 35 SSR loci. Among different regions, genetic diversity indices of Southern Shaanxi were the highest in 17 of the 35 SSR loci, followed by that of Northern Shaanxi (11 loci) and Guanzhong (7 loci). The highest average genetic diversity index of 35 loci was found in South Shaanxi population, followed by North Shaanxi and Guanzhong population, respectively, but the difference between any 2 populations was not significant. 16 SSR loci showed the lowest genetic diversity and 11 SSR loci displayed the highest genetic diversity in Northern Shaanxi population.

Cluster analysis and principal component analysis

The simple matching coefficients (SMC) among 91 soybean accessions ranged from 0.740 (between S43 from southern Shaanxi and N82 from northern Shaanxi) to 0.920 (between M17 and M18, both landraces from the same geographic region of Shaanxi, Guanzhong), with an

average of 0.801. The averaged SMC of each geographic group was 0.802 for northern Shaanxi, 0.811 for Guanzhong, 0.809 for southern Shaanxi (Table 2). The averaged SMC between any 2 geographic groups was 0.802 for Guanzhong-Southern Shaanxi, 0.793 for Guanzhong-Northern Shaanxi and 0.791 for Northern-Southern Shaanxi. The population from northern Shaanxi has a higher level diversity than the soybean landraces from Guanzhong and southern Shaanxi.

The dendrogram based on SMC between accessions showed that, 91 accessions formed two major clusters, which generally corresponded to ecotype (Figure 3): cluster I contained 76 soybean landraces, of which 43 were from southern Shaanxi, 28 landraces from Guanzhong, the remaining 5 from northern Shaanxi. Cluster II included 15 accessions from northern Shaanxi. Cluster I was further separated into five subgroups (I-1 to I-5) and one outlier (from North Shaanxi). Group I-1 included 19 landraces from Guanzhong and 3 from northern Shaanxi and it was named as Guanzhong Group. Group I-2 contained 13 landraces from Southern Shaanxi, 2 from Guanzhong, thus, it was designed as Southern Shaanxi Group I. Group I-3 contained 18 landraces, with 10 landraces from Guanzhong and 8 from southern Shaanxi, so it was called Guanzhong-Southern Shaanxi Group. Group I-4 contained 20 landraces from southern Shaanxi and 1 from northern Shaanxi and it was named

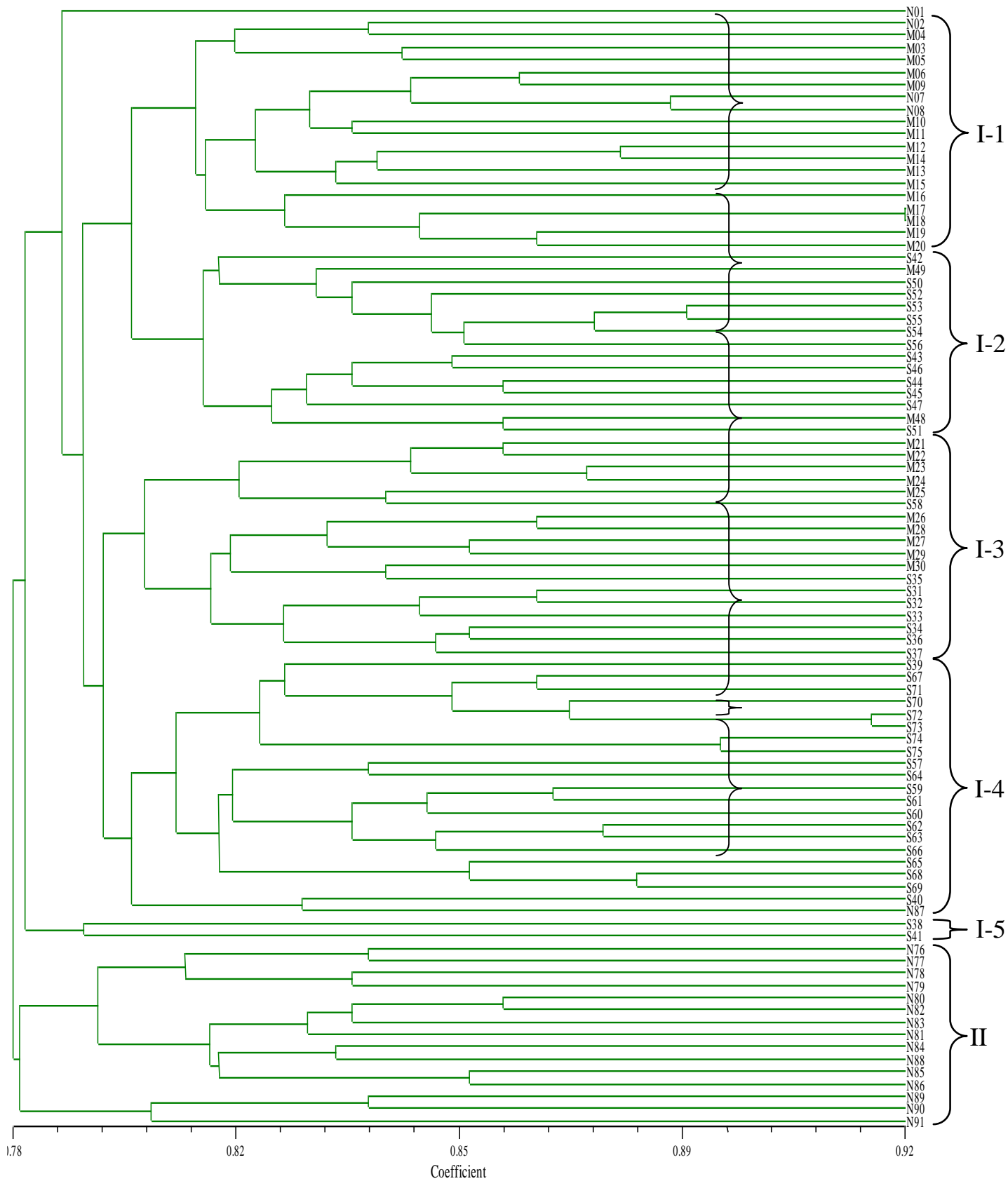


Figure 3: Dendrogram produced using UPGMA cluster analysis based on sample match coefficients demonstrating the association among 91 soybean accessions. The number of each accession was shown in table 1.

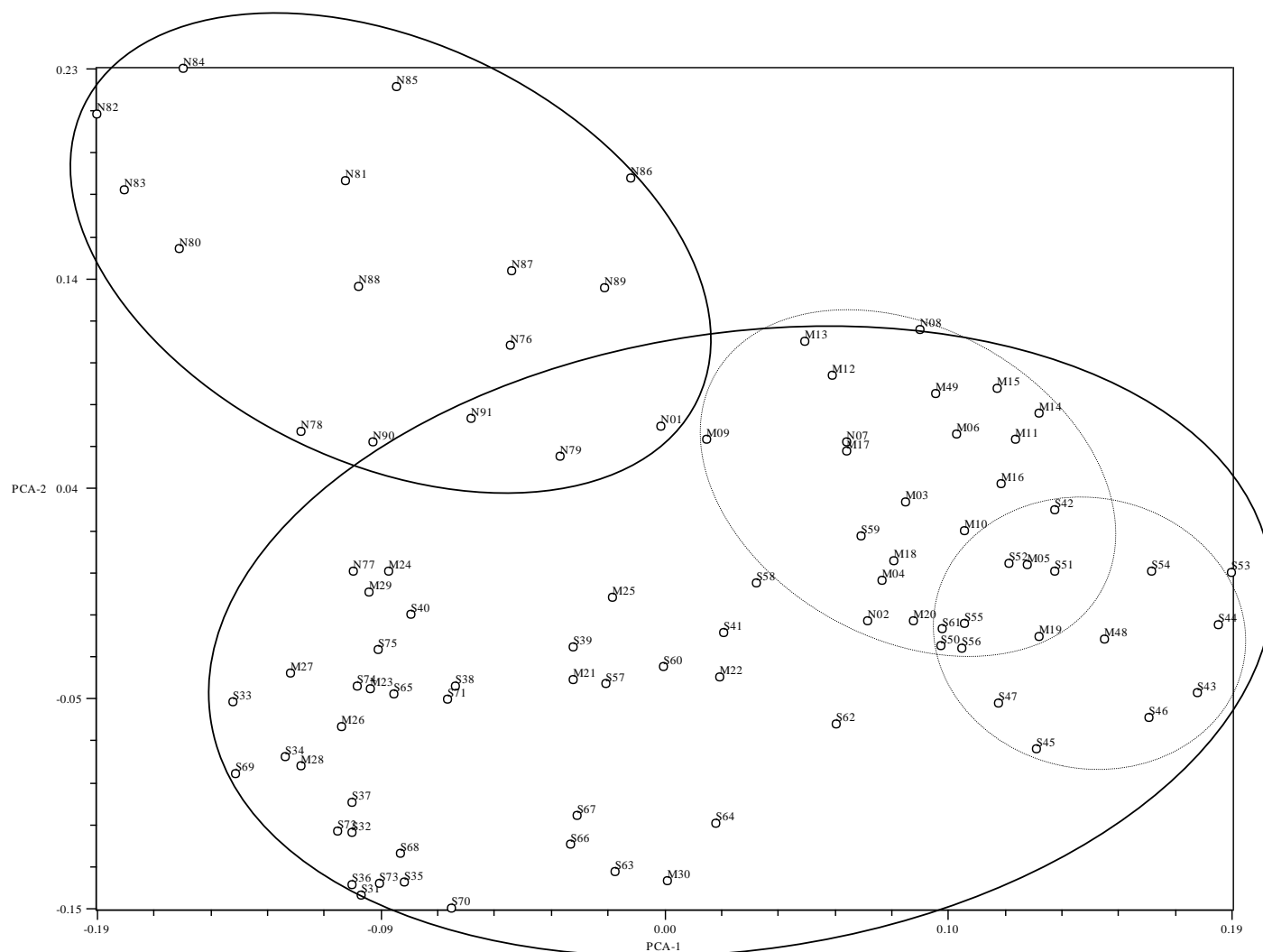


Figure 4. Association between 91 soybean accessions on the basis of the first two principal coordinates obtained from a principal coordinate analysis of sample match coefficients based on SSR and agronomic traits data. The number of each accession was shown in Table 1.

as southern Shaanxi Group II. Group I-5 included only 2 southern Shaanxi landraces, therefore, it was named as Southern Shaanxi Group III.

The PCA analysis (Figure 4) corresponded well with results of clustering by UPGMA. The first principal component accounted for 27.3% of the total variation and the second principal component explained 8.5% of the total variation. These results were consistent with that from the cluster analysis.

AMOVA to partition genetic diversity among the populations

Analysis of molecular variance indicated that, 5.72% of the variance was due to differences among populations of geographic regions and 94.28% was due to difference of individuals within geographic regions (Table 3). However,

despite the small value for variation among populations, it was statistically significant ($P < 0.0001$).

The pairwise F_{st} values for the landraces from three geographic regions of Shaanxi ranged from 0.0428 to 0.0707 between geographic regions, these values are all significantly different from zero (Table 4).

DISCUSSION

Li et al. (2008) studied genetic diversity of 1863 Chinese soybean landraces with 59 SSR loci. The results indicated that, the average number of alleles per locus was 19.7. Li et al. (2010) genotyped a sample of 303 accessions of domesticated soybean and wild soybean with 99 microsatellite markers, they found the SSR loci averaged 21.5 alleles per locus. Guan et al. (2010)

Table 3. Analysis of molecular variance for 91 soybean samples from three different geographic regions of Shaanxi province.

| Source of variation | Degree of freedom | Sum of squares | Variance component | Percentage of variation | P value |
|-----------------------------------|-------------------|----------------|--------------------|-------------------------|---------|
| Among regions | 2 | 207.74 | 2.292 | 5.72 | <0.0001 |
| Individuals within regions | 88 | 3325.05 | 37.79 | 94.28 | <0.0001 |
| Total | 90 | 3532.80 | 40.08 | | |
| Fixation index (F_{st})=0.057 | | | | | |

Table 4. Pairwise F_{st} values for 91 soybean accessions from different geographic regions of Shaanxi province.

| | Southern Shaanxi | Guangzhong | Northern Shaanxi |
|------------------|------------------|------------|------------------|
| Southern Shaanxi | 0.0000 | | |
| Guangzhong | 0.0428* | 0.0000 | |
| Northern Shaanxi | 0.0707* | 0.0663* | 0.0000 |

* Indicating significant at 0.01 probability level.

Table 5. Thirty-five SSR loci, the number of alleles per locus and PIC value for each locus of all 91 accessions in this study.

| Locus (linkage block) | Alleles | PIC | Locus (linkage block) | Alleles | PIC |
|-----------------------|---------|------|-----------------------|---------|------|
| Satt300(A1) | 9 | 0.73 | Satt146(H) | 7 | 0.82 |
| Satt390(A2) | 5 | 0.74 | Satt568(F) | 5 | 0.73 |
| Satt197(B1) | 9 | 0.64 | Satt012 (G) | 7 | 0.72 |
| Satt415(B1) | 6 | 0.72 | Satt434(H) | 6 | 0.78 |
| Satt168(B2) | 7 | 0.67 | Satt442 (H) | 7 | 0.74 |
| Satt577(B2) | 5 | 0.69 | Satt571(I) | 7 | 0.82 |
| Satt194(C1) | 5 | 0.72 | Satt414(J) | 9 | 0.80 |
| Satt565(C1) | 10 | 0.82 | Sct_001(J) | 6 | 0.85 |
| Satt371(C2) | 5 | 0.71 | Satt001 (K) | 8 | 0.77 |
| Satt286 (C2) | 7 | 0.75 | Satt242(K) | 8 | 0.40 |
| Satt267(D1a+Q) | 5 | 0.66 | Sat_099(L) | 6 | 0.78 |
| Satt184(D1a+Q) | 11 | 0.89 | Satt462(L) | 10 | 0.87 |
| Satt005(D1b+w) | 6 | 0.76 | Satt590 (M) | 12 | 0.84 |
| Satt216(D1b+w) | 9 | 0.71 | Satt022(N) | 6 | 0.71 |
| Satt226(D2) | 8 | 0.75 | Satt339(N) | 6 | 0.80 |
| Satt002(D2) | 6 | 0.78 | Satt259(O) | 12 | 0.72 |
| Satt230 (E) | 4 | 0.73 | Satt345(O) | 6 | 0.80 |
| Satt268 (E) | 5 | 0.60 | | | |

compared the genetic diversity of 205 Chinese landraces, which represented the 7 different soybean ecotypes in China, with 39 Japanese soybean accessions from various regions. Total of 745 alleles were detected in 46 SSR loci with an average of 16.2 alleles per locus. In this study, we genotyped 91 Shaanxi soybean landraces with 35 SSR loci and obtained 7.14 alleles per locus which was much lower than that in the previous studies. It might be that our samples were obtained only from one province, whereas the earlier mentioned studies included

accessions from all over the China and worldwide or wild soybean. However, our result corresponded well with the study of Wang et al. (2010), who analyzed 40 soybean accessions including cultivars, landraces and wild soybean accessions using 40 SSR primer pairs and found 6.55 alleles per locus. Our result indicated that, there was relatively abundant allelic diversity among Shaanxi soybean landraces.

Genetic diversity in Southern Shaanxi population is higher than that in either Guanzhong or Northern Shaanxi

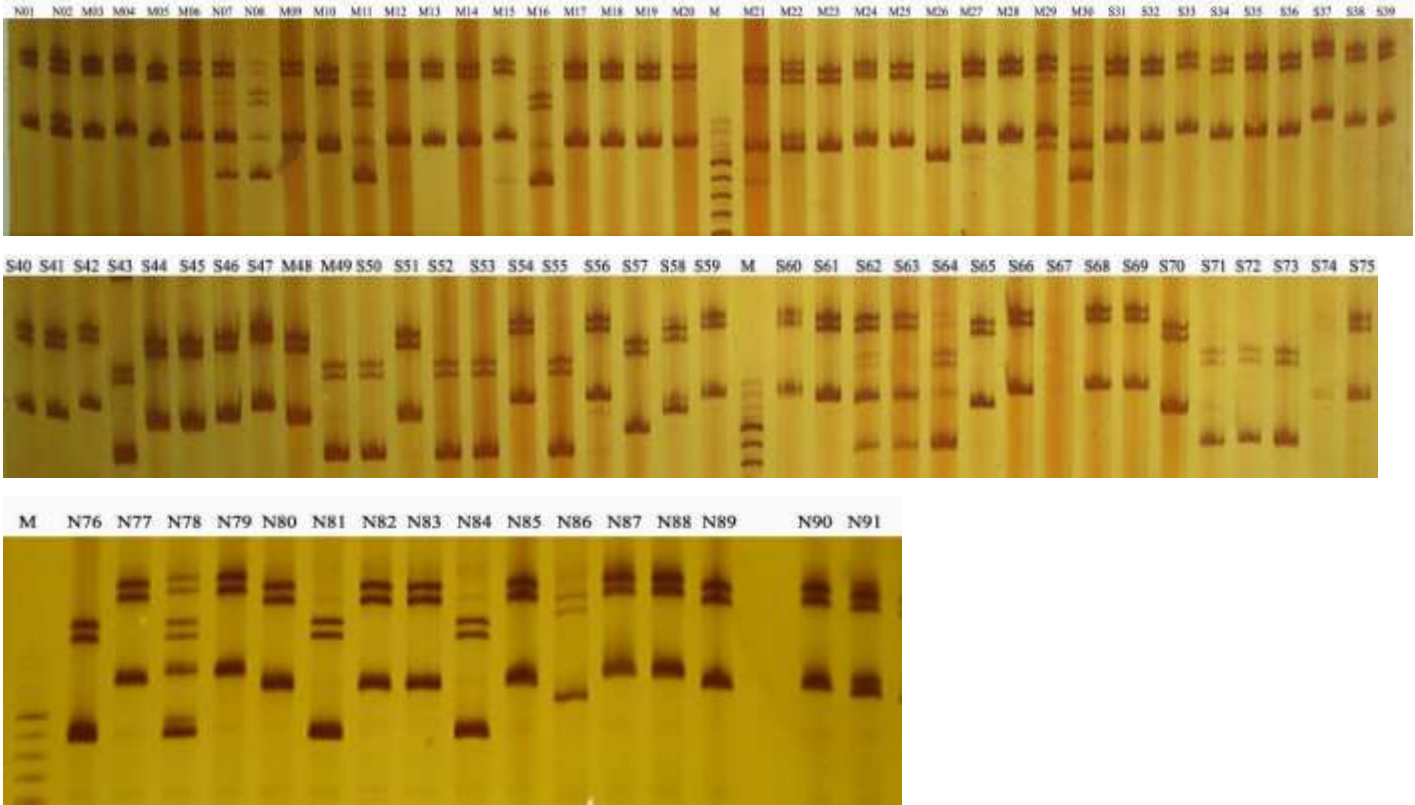


Figure 5. Patterns of polymorphic amplification in all 91 soybean accessions at SSR locus Satt259. The number of each accession was shown in Table 1; M, DNA marker.

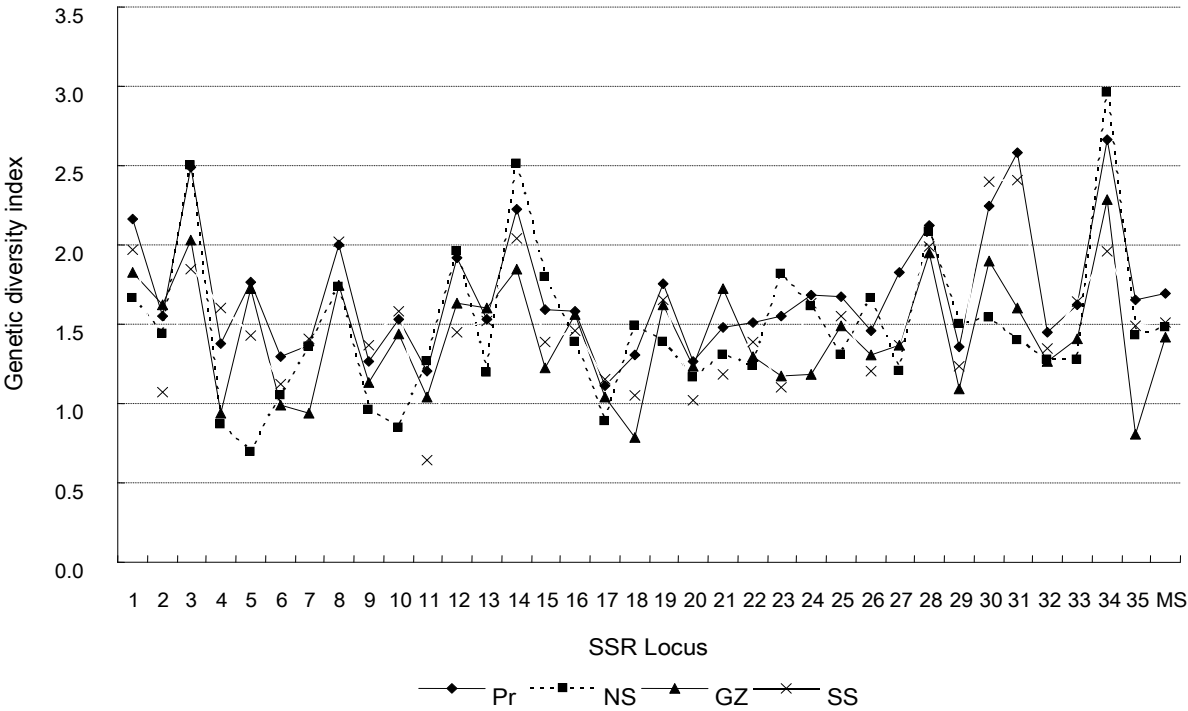


Figure 6. Genetic diversity indices of 35 SSR loci in whole province and different regions. The number 1-35 stand for different SSR primer which could be seen in Table S1. MS=Average genetic diversity index of 35 loci; whole province (Pr), Northern Shaanxi (NS), Guangzhong (GZ) and Southern Shaanxi (SS).

Table 6. Thirteen agronomic traits and their max, min, average, standard deviation and CV for each trait.

| Code no. | Accession no. | PH | NB | NM | PP | PB | PS | SW | PSW | SS | TF | AF | PC | FC |
|----------|---------------|-------|------|------|------|-------|-------|------|------|-----|------|-------|------|------|
| N01 | ZDD10255 | 67.5 | 3.0 | 17.9 | 22.1 | 27.8 | 90.9 | 16.3 | 24.7 | 2.8 | 52.7 | 102.3 | 44.0 | 13.2 |
| N02 | ZDD10170 | 66.1 | 5.7 | 17.9 | 30.8 | 76.9 | 195.7 | 11.4 | 22.0 | 2.2 | 54.7 | 79.7 | 43.8 | 18.1 |
| M03 | ZDD10207 | 133.5 | 8.7 | 25.3 | 37.1 | 105.2 | 247.1 | 21.2 | 47.0 | 1.6 | 68.3 | 97.3 | 43.3 | 18.5 |
| M04 | ZDD10199 | 94.3 | 7.1 | 15.5 | 16.6 | 126.5 | 258.2 | 11.8 | 28.7 | 2.1 | 67.7 | 81.7 | 44.8 | 17.2 |
| M05 | ZDD10250 | 72.3 | 6.0 | 17.0 | 33.5 | 96.3 | 245.2 | 13.9 | 35.3 | 1.7 | 71.7 | 90.0 | 40.7 | 19.0 |
| M06 | ZDD10315 | 123.2 | 8.2 | 21.4 | 23.4 | 199.4 | 402.5 | 8.5 | 42.0 | 3.2 | 65.0 | 90.0 | 38.9 | 16.2 |
| N07 | ZDD10297 | 129.4 | 5.5 | 15.2 | 17.2 | 142.2 | 305.5 | 7.8 | 23.1 | 3.5 | 68.0 | 81.0 | 41.9 | 16.1 |
| N08 | ZDD10299 | 67.0 | 7.3 | 16.0 | 44.3 | 137.1 | 305.2 | 10.7 | 24.3 | 3.5 | 64.0 | 90.3 | 40.8 | 15.0 |
| M09 | ZDD10309 | 148.6 | 4.8 | 23.4 | 56.9 | 175.0 | 444.9 | 8.8 | 41.0 | 2.9 | 58.3 | 93.3 | 41.6 | 16.1 |
| M10 | ZDD10337 | 182.5 | 6.9 | 23.8 | 40.8 | 216.2 | 462.3 | 8.8 | 36.3 | 2.2 | 68.3 | 91.7 | 39.1 | 18.0 |
| M11 | ZDD10371 | 44.1 | 4.1 | 16.0 | 47.8 | 91.9 | 259.3 | 8.3 | 17.7 | 1.6 | 66.3 | 83.3 | 39.4 | 18.3 |
| M12 | ZDD03614 | 92.2 | 4.8 | 22.4 | 23.2 | 58.9 | 138.2 | 18.0 | 22.0 | 1.4 | 62.0 | 87.3 | 46.0 | 17.6 |
| M13 | ZDD03618 | 113.9 | 6.1 | 19.3 | 41.5 | 149.7 | 292.3 | 10.8 | 43.7 | 2.2 | 62.0 | 94.3 | 46.0 | 16.4 |
| M14 | ZDD10408 | 78.7 | 5.6 | 17.4 | 18.3 | 53.8 | 112.7 | 17.7 | 22.3 | 1.5 | 61.7 | 87.7 | 46.1 | 17.4 |
| M15 | ZDD10413 | 73.8 | 4.7 | 17.8 | 37.3 | 79.3 | 195.3 | 20.4 | 35.0 | 1.7 | 67.7 | 85.7 | 42.8 | 20.2 |
| M16 | ZDD10418 | 52.5 | 5.6 | 15.9 | 44.4 | 106.7 | 251.5 | 13.1 | 34.0 | 1.5 | 66.3 | 88.0 | 44.2 | 18.0 |
| M17 | ZDD10386 | 137.4 | 6.5 | 21.5 | 27.2 | 85.3 | 215.3 | 20.1 | 40.7 | 1.6 | 67.0 | 91.3 | 44.6 | 18.5 |
| M18 | ZDD10379 | 69.1 | 5.8 | 18.7 | 41.7 | 130.2 | 302.4 | 12.3 | 44.0 | 1.7 | 67.0 | 96.7 | 43.0 | 18.4 |
| M19 | ZDD10646 | 115.3 | 4.0 | 24.1 | 39.8 | 81.6 | 220.5 | 19.8 | 40.3 | 1.8 | 75.0 | 94.0 | 43.8 | 18.4 |
| M20 | ZDD10636 | 138.7 | 6.9 | 23.0 | 31.1 | 134.7 | 265.6 | 11.4 | 24.3 | 2.2 | 53.0 | 94.0 | 44.1 | 16.5 |
| M21 | ZDD03669 | 177.3 | 6.3 | 20.5 | 33.2 | 186.1 | 372.8 | 9.2 | 63.3 | 3.6 | 67.3 | 87.7 | 41.0 | 17.1 |
| M22 | ZDD03671 | 92.9 | 4.8 | 21.3 | 73.4 | 148.1 | 390.5 | 7.5 | 22.0 | 3.2 | 67.0 | 82.0 | 41.5 | 16.1 |
| M23 | ZDD03666 | 180.7 | 6.8 | 21.7 | 33.0 | 184.5 | 420.5 | 7.2 | 35.3 | 2.9 | 62.0 | 94.3 | 39.0 | 17.8 |
| M24 | ZDD10730 | 85.3 | 5.3 | 20.0 | 75.3 | 180.5 | 448.3 | 7.7 | 32.7 | 3.2 | 64.0 | 87.3 | 41.5 | 15.7 |
| M25 | ZDD10742 | 151.2 | 5.3 | 20.8 | 33.8 | 146.7 | 333.0 | 8.6 | 26.7 | 3.3 | 64.0 | 87.3 | 42.7 | 16.0 |
| M26 | ZDD24061 | 90.9 | 4.6 | 19.1 | 37.4 | 47.4 | 197.1 | 20.0 | 41.3 | 1.4 | 49.7 | 71.0 | 45.8 | 20.1 |
| M27 | ZDD10809 | 66.8 | 5.4 | 18.5 | 28.9 | 58.4 | 149.1 | 17.5 | 16.0 | 1.9 | 52.3 | 79.3 | 46.4 | 17.3 |
| M28 | ZDD03700 | 180.0 | 5.9 | 19.7 | 25.3 | 189.7 | 385.8 | 7.0 | 21.3 | 2.6 | 58.3 | 88.3 | 41.3 | 17.6 |
| M29 | ZDD10802 | 83.3 | 4.9 | 21.1 | 29.8 | 57.6 | 138.8 | 17.9 | 22.0 | 1.7 | 61.3 | 88.0 | 46.1 | 16.5 |
| M30 | ZDD03717 | 146.0 | 8.0 | 23.1 | 19.1 | 131.8 | 289.0 | 16.3 | 47.0 | 2.5 | 68.3 | 91.7 | 40.6 | 18.1 |
| S31 | ZDD10184 | 81.1 | 4.5 | 19.3 | 46.0 | 98.3 | 260.7 | 19.8 | 18.3 | 1.8 | 67.0 | 79.7 | 47.5 | 17.1 |
| S32 | ZDD10517 | 58.2 | 3.9 | 14.0 | 44.5 | 56.3 | 172.1 | 15.2 | 23.3 | 1.7 | 54.7 | 62.0 | 47.0 | 18.1 |
| S33 | ZDD10458 | 84.1 | 5.0 | 19.7 | 32.3 | 55.1 | 131.6 | 19.3 | 20.7 | 1.8 | 67.0 | 80.3 | 48.2 | 16.5 |
| S34 | ZDD10460 | 95.6 | 5.3 | 20.2 | 26.8 | 85.1 | 192.8 | 20.8 | 31.7 | 1.6 | 62.7 | 96.7 | 45.4 | 18.0 |
| S35 | ZDD10422 | 159.1 | 9.4 | 25.3 | 26.5 | 142.1 | 271.5 | 21.9 | 46.0 | 2.2 | 74.3 | 96.0 | 45.8 | 17.7 |
| S36 | ZDD10509 | 87.7 | 5.4 | 18.6 | 28.4 | 92.3 | 208.3 | 17.3 | 38.3 | 1.8 | 69.0 | 90.7 | 45.9 | 18.5 |
| S37 | ZDD10473 | 77.2 | 5.4 | 16.9 | 33.0 | 84.1 | 189.5 | 18.1 | 28.3 | 1.9 | 66.3 | 93.3 | 41.9 | 18.6 |
| S38 | ZDD10373 | 91.5 | 7.4 | 22.6 | 50.2 | 114.0 | 273.7 | 14.6 | 37.0 | 1.9 | 68.0 | 89.7 | 43.4 | 19.0 |
| S39 | ZDD10459 | 81.2 | 5.5 | 23.7 | 42.1 | 92.9 | 208.7 | 13.3 | 30.7 | 1.5 | 69.0 | 88.3 | 45.7 | 17.7 |
| S40 | ZDD10376 | 108.7 | 7.4 | 21.6 | 42.1 | 118.5 | 240.8 | 15.4 | 33.3 | 2.2 | 69.0 | 97.3 | 42.4 | 19.1 |
| S41 | ZDD10609 | 125.7 | 7.7 | 23.9 | 55.5 | 236.5 | 449.7 | 6.4 | 27.7 | 1.8 | 77.7 | 84.0 | 48.1 | 16.4 |
| S42 | ZDD10445 | 69.2 | 4.4 | 18.9 | 48.7 | 55.8 | 192.8 | 13.0 | 21.0 | 1.7 | 50.3 | 76.7 | 43.7 | 19.6 |
| S43 | ZDD19503 | 94.3 | 10.0 | 21.4 | 31.9 | 144.3 | 321.6 | 11.2 | 32.7 | 1.7 | 78.0 | 85.7 | 43.3 | 19.2 |
| S44 | ZDD19497 | 113.7 | 6.7 | 26.9 | 55.0 | 153.3 | 322.8 | 16.0 | 50.7 | 1.8 | 77.0 | 99.3 | 44.5 | 18.7 |
| S45 | ZDD19463 | 138.5 | 8.7 | 24.7 | 25.2 | 122.5 | 248.9 | 17.3 | 43.7 | 2.1 | 75.0 | 96.3 | 44.3 | 18.6 |
| S46 | ZDD10442 | 80.2 | 7.5 | 16.8 | 60.6 | 146.6 | 337.8 | 13.5 | 40.0 | 1.9 | 74.3 | 94.7 | 42.1 | 19.2 |
| S47 | ZDD10454 | 89.0 | 5.3 | 20.4 | 68.0 | 97.8 | 300.9 | 11.9 | 44.1 | 1.6 | 75.7 | 86.7 | 42.9 | 18.8 |
| M48 | ZDD03629 | 82.5 | 5.7 | 20.3 | 46.8 | 128.7 | 266.2 | 10.2 | 20.0 | 1.7 | 61.0 | 88.3 | 44.1 | 17.2 |
| M49 | ZDD24060 | 51.0 | 4.7 | 13.1 | 31.7 | 45.4 | 145.3 | 19.7 | 24.0 | 1.6 | 50.3 | 82.3 | 44.6 | 20.6 |
| S50 | ZDD10600 | 97.1 | 6.6 | 22.1 | 60.5 | 163.9 | 347.9 | 8.2 | 26.7 | 1.9 | 77.0 | 94.7 | 45.6 | 17.7 |
| S51 | ZDD10656 | 84.9 | 5.4 | 20.1 | 26.0 | 52.8 | 121.1 | 14.9 | 15.7 | 1.7 | 58.0 | 92.0 | 47.1 | 17.4 |

Table 6. Continued.

| | | | | | | | | | | | | | | |
|-----------------|----------|-------|------|------|------|-------|-------|------|------|------|------|-------|------|------|
| S52 | ZDD10661 | 88.4 | 5.3 | 18.9 | 29.8 | 73.7 | 178.1 | 19.8 | 31.7 | 1.8 | 69.7 | 91.7 | 45.5 | 18.1 |
| S53 | ZDD10699 | 87.7 | 4.1 | 23.1 | 59.2 | 62.1 | 178.5 | 12.0 | 19.0 | 1.8 | 76.3 | 86.7 | 43.9 | 18.0 |
| S54 | ZDD10664 | 91.4 | 4.8 | 19.1 | 51.8 | 94.5 | 212.2 | 19.9 | 36.3 | 1.6 | 67.7 | 94.3 | 44.3 | 17.4 |
| S55 | ZDD10694 | 96.5 | 6.6 | 27.2 | 52.9 | 107.3 | 269.9 | 13.4 | 30.7 | 1.8 | 69.7 | 90.7 | 46.1 | 17.9 |
| S56 | ZDD10698 | 92.1 | 6.1 | 27.5 | 35.8 | 74.9 | 172.0 | 20.7 | 32.0 | 2.0 | 94.0 | 82.0 | 45.7 | 18.1 |
| S57 | ZDD10683 | 73.7 | 5.4 | 18.8 | 54.7 | 116.4 | 279.5 | 15.2 | 35.0 | 2.0 | 64.0 | 97.3 | 46.7 | 17.6 |
| S58 | ZDD10757 | 154.0 | 5.2 | 20.5 | 28.9 | 104.5 | 227.9 | 10.8 | 24.0 | 3.5 | 62.7 | 85.7 | 40.8 | 16.0 |
| S59 | ZDD10762 | 116.8 | 7.6 | 22.9 | 22.5 | 93.1 | 191.5 | 24.0 | 36.0 | 1.8 | 80.0 | 87.7 | 42.8 | 16.7 |
| S60 | ZDD10796 | 116.4 | 4.0 | 22.3 | 55.1 | 68.4 | 204.3 | 16.1 | 31.3 | 1.9 | 84.7 | 76.7 | 43.8 | 16.4 |
| S61 | ZDD10775 | 84.2 | 7.5 | 18.3 | 27.4 | 103.0 | 191.7 | 14.7 | 29.7 | 2.3 | 73.0 | 89.0 | 43.1 | 17.0 |
| S62 | ZDD10777 | 106.8 | 8.7 | 24.5 | 28.4 | 110.7 | 222.1 | 13.3 | 25.7 | 1.8 | 88.0 | 86.0 | 45.3 | 16.7 |
| S63 | ZDD10768 | 105.7 | 7.1 | 26.3 | 42.7 | 120.6 | 245.7 | 16.5 | 42.0 | 2.2 | 81.0 | 96.7 | 42.1 | 17.1 |
| S64 | ZDD10825 | 83.8 | 5.5 | 20.4 | 62.3 | 114.6 | 335.5 | 12.7 | 40.7 | 2.1 | 61.3 | 92.0 | 40.0 | 18.1 |
| S65 | ZDD10868 | 150.4 | 7.6 | 24.3 | 16.3 | 170.8 | 293.6 | 15.3 | 40.7 | 2.0 | 82.3 | 97.3 | 42.0 | 17.3 |
| S66 | ZDD10841 | 108.2 | 6.6 | 19.1 | 18.9 | 97.7 | 206.9 | 17.2 | 33.7 | 1.7 | 67.7 | 85.7 | 42.5 | 17.8 |
| S67 | ZDD10845 | 96.9 | 6.6 | 21.5 | 31.7 | 91.7 | 200.7 | 15.7 | 28.0 | 1.7 | 68.3 | 93.3 | 42.2 | 17.9 |
| S68 | ZDD10828 | 135.4 | 8.1 | 22.4 | 16.8 | 168.9 | 315.7 | 14.6 | 39.0 | 2.1 | 66.7 | 98.7 | 42.2 | 17.1 |
| S69 | ZDD10883 | 128.7 | 9.2 | 20.8 | 16.4 | 241.5 | 462.8 | 11.5 | 47.3 | 2.0 | 84.7 | 84.0 | 43.6 | 17.1 |
| S70 | ZDD19536 | 92.9 | 5.6 | 18.5 | 21.9 | 84.0 | 180.7 | 20.0 | 37.3 | 1.9 | 71.7 | 91.0 | 39.9 | 18.6 |
| S71 | ZDD03691 | 98.1 | 6.3 | 20.1 | 27.1 | 91.9 | 216.7 | 17.9 | 31.3 | 1.7 | 69.7 | 87.7 | 41.3 | 18.7 |
| S72 | ZDD03706 | 88.4 | 5.6 | 19.7 | 39.9 | 121.4 | 273.9 | 11.4 | 26.3 | 2.1 | 69.0 | 85.3 | 44.2 | 17.8 |
| S73 | ZDD10927 | 90.0 | 6.6 | 17.3 | 17.5 | 128.1 | 233.1 | 20.1 | 39.7 | 2.0 | 68.0 | 97.3 | 41.4 | 17.9 |
| S74 | ZDD10907 | 104.1 | 5.7 | 18.9 | 27.9 | 69.4 | 163.3 | 16.9 | 25.0 | 1.9 | 68.3 | 80.7 | 46.1 | 17.9 |
| S75 | ZDD10912 | 102.9 | 6.9 | 23.2 | 35.6 | 88.8 | 204.6 | 19.1 | 35.0 | 1.9 | 73.0 | 99.7 | 42.6 | 18.9 |
| N76 | ZDD10226 | 62.4 | 4.6 | 17.9 | 21.3 | 65.8 | 136.5 | 18.3 | 33.9 | 2.2 | 62.0 | 73.0 | 44.3 | 16.3 |
| N77 | ZDD10230 | 67.8 | 6.3 | 17.8 | 27.0 | 121.5 | 324.5 | 17.0 | 45.3 | 2.3 | 53.0 | 84.0 | 44.5 | 16.7 |
| N78 | ZDD10237 | 75.5 | 6.3 | 17.5 | 28.3 | 80.3 | 234.0 | 17.3 | 37.3 | 2.1 | 49.0 | 86.0 | 42.6 | 18.7 |
| N79 | ZDD10242 | 97.2 | 9.0 | 17.2 | 20.8 | 118.0 | 243.4 | 14.1 | 32.1 | 1.8 | 49.0 | 81.0 | 44.8 | 18.0 |
| N80 | ZDD10134 | 67.0 | 7.2 | 15.8 | 18.4 | 108.4 | 228.8 | 17.0 | 31.9 | 2.0 | 45.0 | 60.0 | 42.3 | 17.6 |
| N81 | ZDD10143 | 65.2 | 3.6 | 13.8 | 23.0 | 24.2 | 109.8 | 19.6 | 18.7 | 1.7 | 39.0 | 60.0 | 46.5 | 17.6 |
| N82 | ZDD10260 | 47.3 | 3.2 | 15.5 | 15.2 | 35.1 | 95.1 | 18.2 | 22.7 | 2.0 | 44.0 | 81.0 | 45.7 | 17.8 |
| N83 | ZDD10274 | 136.4 | 6.6 | 21.4 | 12.0 | 71.6 | 175.8 | 17.2 | 33.5 | 2.1 | 53.0 | 85.0 | 46.7 | 18.1 |
| N84 | ZDD10329 | 109.6 | 5.8 | 20.4 | 15.8 | 91.2 | 205.2 | 14.7 | 35.7 | 2.3 | 67.0 | 63.0 | 45.5 | 16.4 |
| N85 | ZDD10332 | 105.9 | 6.9 | 19.8 | 17.3 | 68.8 | 146.1 | 22.8 | 36.1 | 1.7 | 61.0 | 74.0 | 46.4 | 17.4 |
| N86 | ZDD10135 | 103.3 | 3.6 | 15.8 | 27.6 | 39.6 | 152.0 | 14.0 | 15.8 | 2.3 | 47.0 | 62.0 | 48.6 | 16.1 |
| N87 | ZDD10239 | 91.3 | 6.8 | 14.3 | 19.5 | 94.5 | 179.5 | 14.9 | 28.6 | 1.9 | 50.0 | 59.0 | 45.8 | 17.3 |
| N88 | ZDD10263 | 141.4 | 5.0 | 20.2 | 39.0 | 137.0 | 324.4 | 7.0 | 23.5 | 4.6 | 49.0 | 56.0 | 45.8 | 15.8 |
| N89 | ZDD10294 | 94.2 | 6.4 | 19.8 | 26.8 | 78.0 | 193.8 | 7.3 | 18.7 | 3.4 | 64.0 | 54.0 | 45.0 | 16.0 |
| N90 | ZDD10252 | 121.6 | 6.0 | 19.4 | 7.4 | 79.4 | 181.8 | 9.5 | 16.5 | 4.6 | 62.0 | 56.0 | 46.4 | 15.3 |
| N91 | ZDD10270 | 104.0 | 7.8 | 19.0 | 23.3 | 177.3 | 477.3 | 8.1 | 29.3 | 4.0 | 53.0 | 56.0 | 46.5 | 16.3 |
| Max | | 182.5 | 10.0 | 27.5 | 75.3 | 241.5 | 477.3 | 24.0 | 63.3 | 4.6 | 94.0 | 102.3 | 48.6 | 20.6 |
| Min | | 44.1 | 3.0 | 13.1 | 7.4 | 24.2 | 90.9 | 6.4 | 15.7 | 1.4 | 39.0 | 54.0 | 38.9 | 13.2 |
| Average | | 101.0 | 6.1 | 20.1 | 34.2 | 108.6 | 248.5 | 14.6 | 31.7 | 2.2 | 65.2 | 85.3 | 43.9 | 17.5 |
| Stand deviation | | 31.2 | 1.5 | 3.1 | 14.6 | 46.7 | 90.7 | 4.4 | 9.4 | 0.7 | 10.3 | 11.31 | 2.3 | 1.19 |
| CV | | 0.31 | 0.24 | 0.16 | 0.43 | 0.42 | 0.36 | 0.30 | 0.29 | 0.31 | 0.16 | 0.13 | 0.05 | 0.07 |

Plant height (PH); number of branches (NB); number of nodes in main stem(NM); number of pods in main stem (PP); number of pods in branches (PB); number of seeds per plant(PS); 100-seed weight (SW); seed weight per plant (PSW); index of seed shape (SS); days to flowering (TF); days after flowering (AF); protein content (PC); fat content (FC).

germplasm. The higher number of alleles and PIC value present in the Southern Shaanxi population than those in

Guanzhong and Northern Shaanxi population suggested that, Southern Shaanxi population is a potential source

for new alleles for use in soybean breeding programs. Obviously, the alleles that was only detected in one geographic region was much higher in Northern and Southern Shaanxi than in Guanzhong, indicating that Northern or Southern Shaanxi population had much more unique alleles. This could be explained by various climate and landforms in southern and northern Shaanxi region, while environment in Guanzhong region is quite uniform.

The highest SSR diversity was detected in the Southern Shaanxi soybean population, followed by Northern Shaanxi and Guanzhong populations. However, the average genetic diversity of agronomic traits in Guanzhong soybean population is highest, followed by Southern and Northern Shaanxi populations. One explanation is that, SSR loci reflected the non-coding DNA sequence which did not control phenotypic traits, the second explanation is that, phenotypic traits were easily influenced by environment, the field test was performed in Yangling, Guanzhong region, which was benefit for landraces from Guanzhong to show their phenotypic diversity, while other landraces from north or south Shaanxi were rather difficult to adapt the environment in Guanzhong, which could affect the phenotype value of each trait from these two populations. South Shaanxi germplasm had more SSR alleles per locus and PIC value, whereas North Shaanxi population had the lowest average pairwise SMC which means a more genetic diversity. This reflected different genetic variation of south and north Shaanxi soybean population. South Shaanxi collection contained more allelic variation which was consistent with its environment, whereas accessions from north Shaanxi showed low similarity coefficient, which means there were large genetic distance among accessions. As we know, south Shaanxi region are mountain area and the huge mountain, Qinling covered most of south Shaanxi area. Different mountain ranges created many little valleys, basin or flatlands which were relative isolated from the each other and each has its micro-climate, which could cause new gene variation. While north Shaanxi was hilly region and also had diverse landforms and climate. Genetic diversity of soybean in this region might be higher than what we already know. As we can see from this study, landraces from north Shaanxi, although small in number, were separated into 2 main groups and widely spread on PCA plot, while landraces from Guanzhong and south Shaanxi were only put into the group 2. The degree of genetic similarity of North Shaanxi landraces were lower than those in other 2 populations, similar to the SMC of Guanzhong-south Shaanxi population, this suggested that there would be more genetic diversity in north Shaanxi region, which had not been reported before. Since it was a famous arid area in China, soybean landraces from north Shaanxi may be specifically adapt to adverse conditions such as salt and drought and may have useful genes to tolerate these abiotic stresses. More attention should be paid to collection, evaluation, conservation and utilization of the land-

racess and genes in north Shaanxi region.

In summary, a primary core collection of 91 soybean landraces was established from the entire soybean germplasm collection of Shaanxi province. Previous data showed that, this core collection of 91 accessions is good representative (Liu et al., 2006). UPGMA cluster analysis and PCA analysis based on SSR markers and agronomic data clearly showed that, 91 accessions formed two major clusters and that clusters generally corresponded to geographic origin. AMOVA analysis showed that, a significant proportion of variance (94.28%) was due to differences within populations.

ACKNOWLEDGEMENT

This work was supported by a grant from Northwest A&F University to SW Hu.

REFERENCES

- Chen YW, Nelson RL (2004). Genetic Variation and Relationships among cultivated, wild and semi-wild soybean. *Crop Sci.* 44: 316-325.
- Chen YW, Nelson RL (2005). Relationship between origin and genetic diversity in Chinese soybean germplasm. *Crop Sci.* 45: 1645-1652.
- Cregan PB, Jarvik T, Bush AL, Shoemaker RC, Lark KG, Kahler AL, Van Toai TT, Lohnes DO, Chung J, Specht JE (1999). An integrated genetic linkage map of the soybean genome. *Crop Sci.* 39: 1464-1490.
- Dong YS (1998). Exploration on genetic diversity center for cultivated soybean in China. *Chin. Crops* 1: 18-19.
- Dong YS, Zhuang BC, Zhao LM, Sun H He MY (2001). The genetic diversity of annual wild soybean grown in China. *Theor. Appl. Genet.* 103: 98-103.
- Dong YS, Zhao LM, Liu B, Wang ZW, Jin ZQ, Sun H (2004). The genetic diversity of cultivated soybean grown in China. *Theor. Appl. Genet.* 108: 931-936.
- Excoffier L, Smouse PE, Quattro JM (1992). Analysis of molecular variance inferred from metric distances among DNA haplotypes: application to human mitochondrial DNA data. *Genetics*, 131: 479-491.
- Fu YB, Peterson GW, Morrison MG (2007). Genetic diversity of Canada soybean cultivars and exotic germplasm revealed by simple repeat markers. *Crop Sci.* 47: 1947-1954.
- Fukuda Y (1933). Cytogenetical studies on the wild and cultivated Manchurian soybean (*Glycine max* L.). *Jpn. J. Bot.* 6: 489-506.
- Guan RX, Chang RZ, Li YH, Wang LX, Liu ZX, Qiu LJ (2010). Genetic diversity comparison between Chinese and Japanese soybeans (*Glycine max* (L.) Merr.) revealed by nuclear SSRs. *Genet. Res. Crop Evol.* 57(2): 229-242.
- Guo J, Wang YS, Song C, Zhou JF, Qiu LJ, Huang HW, Wang Y (2010). A single origin and moderate bottleneck during domestication of soybean (*Glycine max*): implications from microsatellites and nucleotide sequences. *Ann. Bot.* 106(3): 505-514.
- Hymowitz T, Newell CA (1981). taxonomy of genus *Glycine*, domestication and uses of soybean. *Econ. Bot.* 35: 272-288.
- Keim P, Olson TC, Shoemaker RC (1988). A RAPD protocol for isolating soybean DNA. *Soybean Genet. Newsl.* 15: 150-152.
- Keim P, Beavis W, Schupp J, Freestone R (1992). Evaluation of soybean RFLP marker diversity in adapted germplasm. *Theor. Appl. Genet.* 85: 205-212.
- Kelley KB, Zhang Q, Lambert KN (2006). Evaluation of auxin-responsive genes in soybean for detection of off-target plant growth regulator herbicides. *Weed Sci.* 54: 220-229.
- Li YH, Li W, Zhang C, Yang LA, Chang RZ, Gaut BS, Qiu LJ (2010).

- Genetic diversity in domesticated soybean (*Glycine max*) and its wild progenitor (*Glycine soja*) for simple sequence repeat and single-nucleotide polymorphism loci. *New phytologist*, 188(1): 242-253.
- Li Y, Guan R, Liu Z, Ma Y, Wang L, Li L, Lin F, Luan W, Chen P, Yan Z, Guan Y, Zhu L, Ning X, Smulders MJM, Li W, Piao R, Cui Y, Yu Z, Guan M, Chang R, Hou A, Shi A, Zhang B, Zhu S, Qiu L (2008). Genetic structure and diversity of cultivated soybean (*Glycine max* (L.) Merr.) landraces in China. *Theor. Appl. Genet.* 117: 857-871.
- Li ZL, Qiu LJ, Thompson JA, Welsh MM, Nelson RL (2001). Molecular genetic analysis of the US and Chinese soybean ancestral lines. *Crop Sci.* 41: 1330-1336.
- Li ZL, Nelson RL (2001). Genetic diversity among soybean accessions from three countries measured by RAPDs. *Crop Sci.* 41: 1337-1347.
- Li ZL, Nelson RL (2002). RAPD marker diversity among cultivated and wild soybean accessions from four Chinese provinces. *Crop Sci.* 42: 1737-1344.
- Liu MJ, Li ML, Shi YG, Hu SW (2006). The representative analysis of the primary core collection in soybean germplasm from Shaanxi. *J. Northwest A & F Univ (Nat. Sci. Edi)*, 34(9): 135-140.
- Lu SL (1978). Discuss about origin of cultivated soybean in China. *Chin Agric. Sci* 4: 90-94.
- McCallum JC, Andrew PM, Shaw M, Butler R, Brash D, Scheffer J, Sims I, Van Heusden S, Shigyo M, Havey MJ (2006). Genetic mapping of a major gene affecting onion bulb fructan content. *Theor. Appl. Genet.* 112(5): 958-967.
- McCouch SR, Chen XI, Panaud O, Temnykh S, Xu YB, Cho YG, Huang N, Ishii T, Blair M (1997). Microsatellite marker development, mapping and applications in rice genetics and breeding. *Plant Mol. Biol.* 35: 89-99.
- Nichols DM, Wang LZ, Pei YL, Glover KD, Diers BW (2007). Variability among Chinese *Glycine soja* and Chinese and north American soybean genotypes. *Crop Sci.* 47: 1289-1298.
- Qiu LJ, Cao YS, Chang RZ, Zhou XA, Wang GX, Sun JY, Xie H, Zhang B, Li XH, Xu ZY, Liu LH (2003). Establishment of Chinese soybean (*Glycine max*) core collection. I. Sampling strategy. *Sci. Agric. Sin.* 36: 1442-1449.
- Rohlf FJ (1992). NTSYS-pc numerical taxonomy and multivariate analysis system. State Univ, of New York, New York.
- Sokal RR, Michener CD (1958). A statistical method for evaluating systematic relationships. *Univ. Kans Sci. Bull.* 38: 1409-1438.
- Vavilov NI (1951). The origin variation immunity and breeding of cultivated plants (translation by K Star Chester). Chron Bot. Ronald Press, New York.
- Wang B, Chang RZ, Yan L, Tao L, Guan RX, Zhang MH, Feng ZF, Qiu LJ (2003). Identification of SSR primer numbers for analyzing genetic diversity of Chinese cultivated soybean. *Mol. Plant Breed.* 1(1): 82-88.
- Wang LZ (1985). The origin, evolution and distribution of soybean. *Soybean Sci.* 4(1): 1-6.
- Wang LX, Guan RX, Liu ZX, Chang RZ, Qiu LJ (2006). Genetic diversity of cultivated soybean revealed by SSR markers. *Crop Sci* 46: 0132-1038.
- Wang M, Li RZ, Yang WM, Du WJ (2010). Assessing the genetic diversity of cultivars and wild soybeans using SSR markers. *Afric. J. Biotechnol.* 9(31): 4857-4866.
- Weir B (1990). Genetic data analysis: Methods for discrete population genetic data. Sinauer Assoc. Sunderland, MA.
- Xie H, Chang RZ, Cao YS, Zhang MH, Feng ZF, Qiu LJ (2003). Selection of core SSR loci by using Chinese autumn soybean. *Sci. Agric. Sin.* 36(4): 360-366.
- Xu B (1993). Studies on the origin and evolution of cultivated soybean in China. In: Liu HL (eds). *Progress in the Research on Crop Breeding*. Agricultural Press, Beijing, pp. 122-139.
- Xu DH, Gai JY (2002). Diversity of chloroplast DNA SSRs in wild and cultivated soybeans: evidence for multiple origins of cultivated soybean. *Theor. Appl. Genet.* 105: 645-653.
- Xu DH, Gai JY (2003). Genetic diversity of wild and cultivated soybeans growing in China revealed by RAPD analysis. *Plant Breed.* 122: 503-506.
- Yoon MS, Lee J, Kim CY, Kang JH, Cho EG, Baek HJ (2009). DNA profiling and genetic diversity of Korean soybean (*Glycine max* (L.) Merroll) landraces by SSR markers. *Euphytica*, 165: 69-77.
- Zhou XA, Peng YH, Wang GX (1998). Preliminary Studies on the Centers of Genetic Diversity and Origination of Cultivated Soybeans in China. *Sci. Agric. Sin.* 31(3): 37-43.